

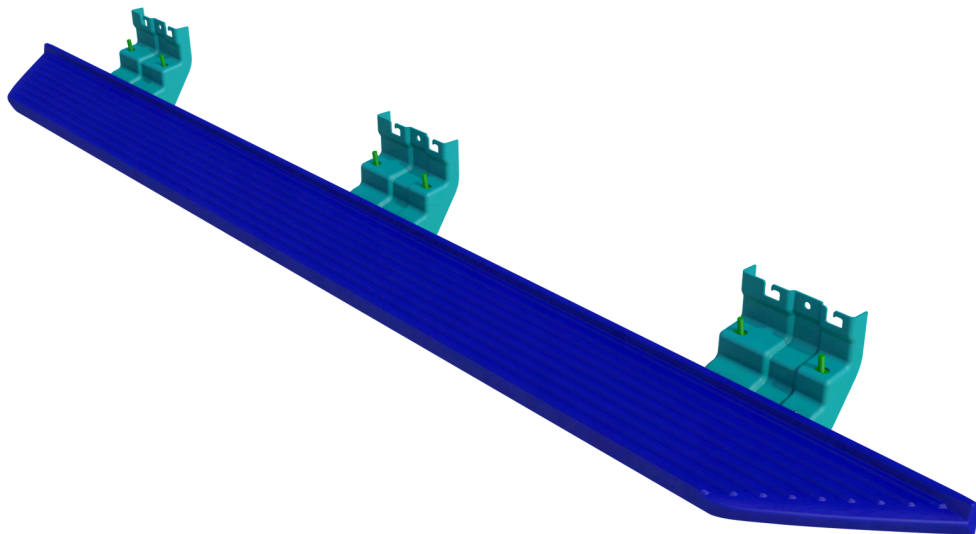


Installation Instructions

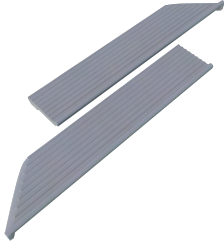
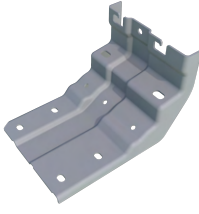

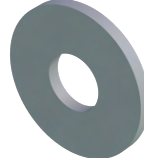


Part No. 2563+B

Vehicle: Ford Transit 2015-2025

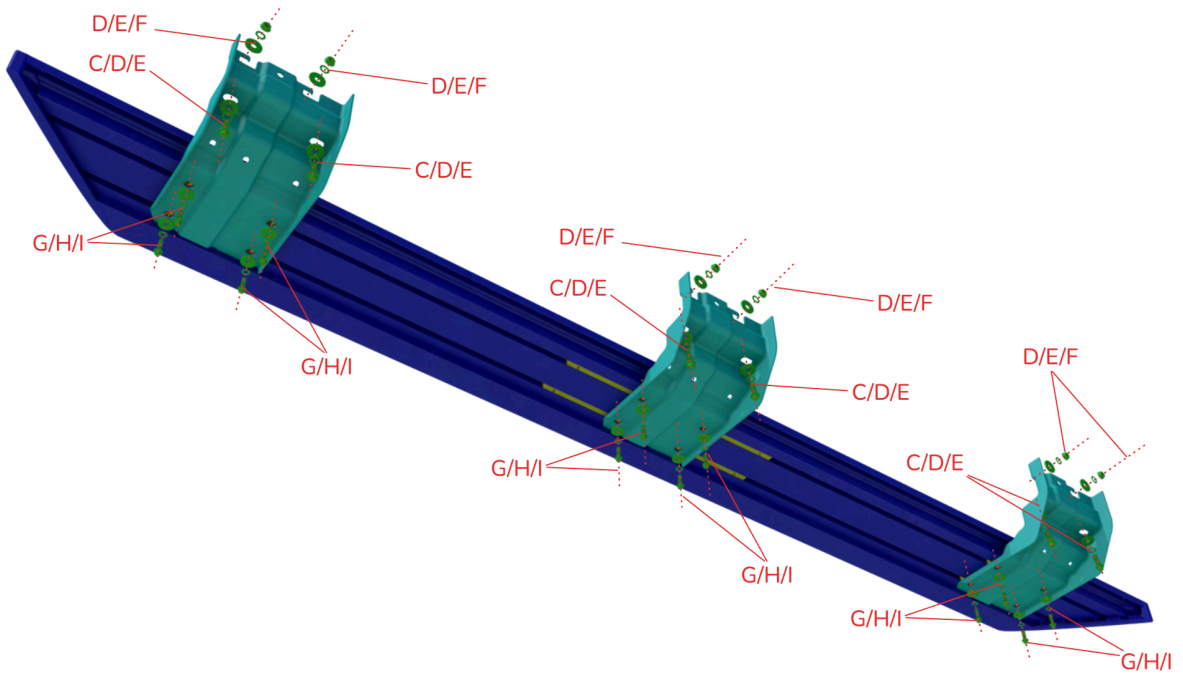
Product: OEM Running Board Passenger Side



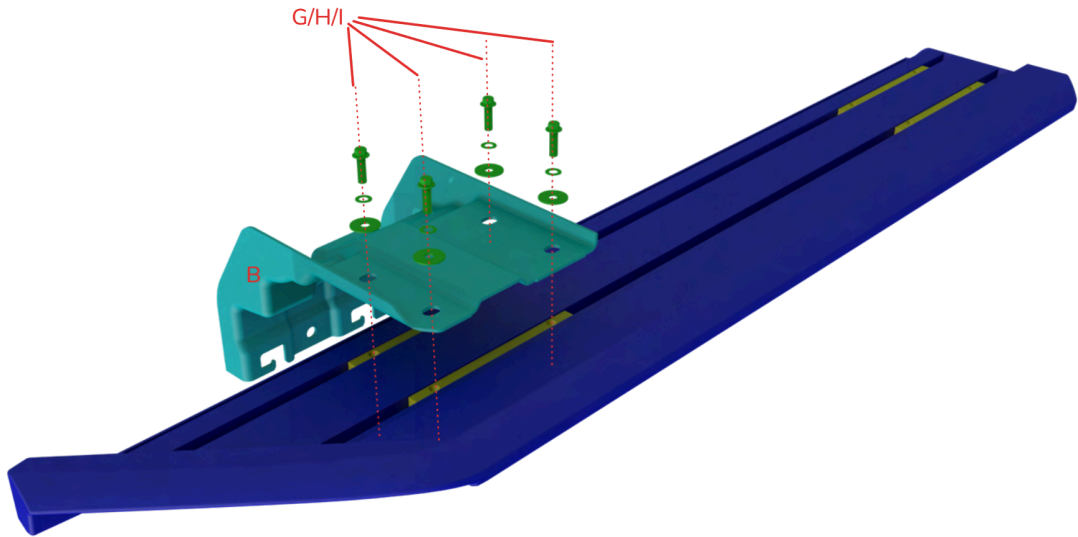
THANK YOU FOR CHOOSING OUR PRODUCT

Names	Pictures	Names	
(A) OEM Running Board (2 Parts)		(B) Bracket (3 Pieces)	
(C) M8x1.25 Flange Hex-Bolt (6 Pieces)		(D) M8 Washer (12 Pieces)	
(E) M8 Lock Washer (12 Pieces)		(F) M8x1.25 Hex-Bolt Nut (6 Pieces)	
(G) M6x1.0 Flange Hex-Bolt (12 Pieces)		(H) M6 Washer (12 Pieces)	
(I) M6 Lock Washer (12 Pieces)			

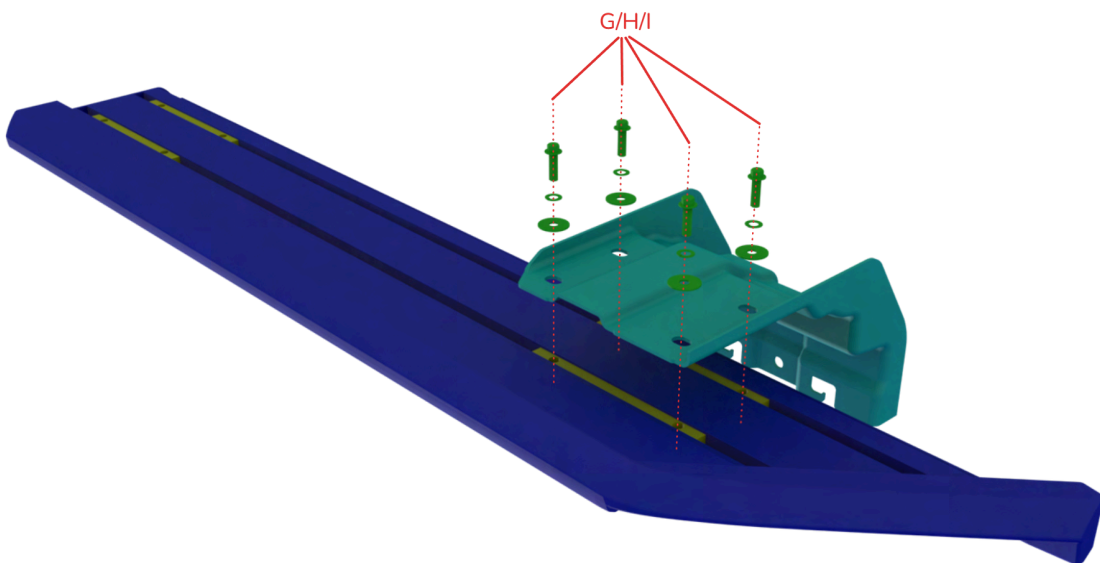
Amount 3 brackets (B) onto T-Slot inside of OEM Running Board (A) with M6x1.0 Flange Hex-Bolt (G/H/I), use M8x1.25 Flange Hex-Bolt (C/D/E and D/E/F) fixed brackets onto the vertical.



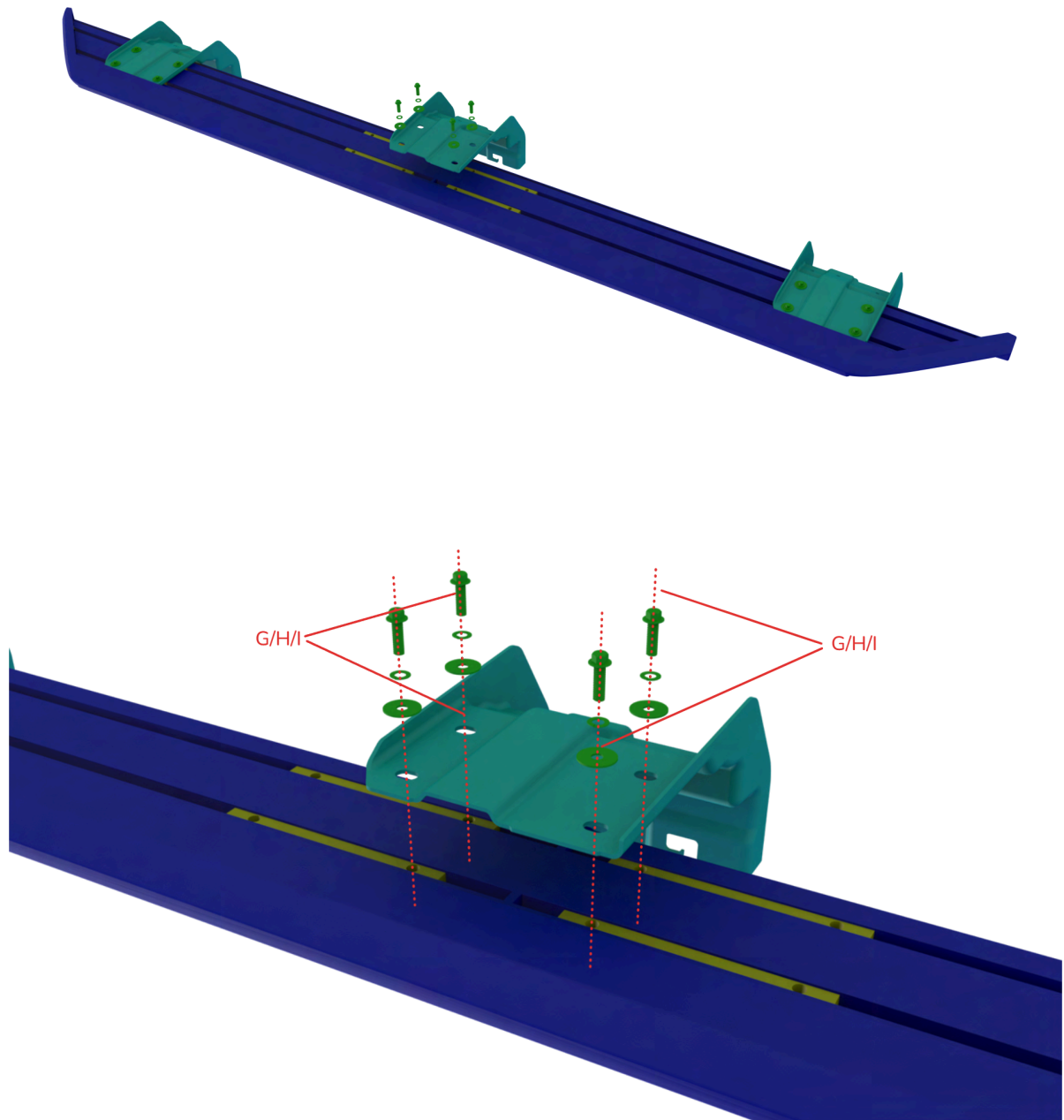
Step1: Amount brackets (B) onto the T-Slot inside of OEM Running Board (A) with M6x1.0 Flange Hex-Bolt (G/H/I)

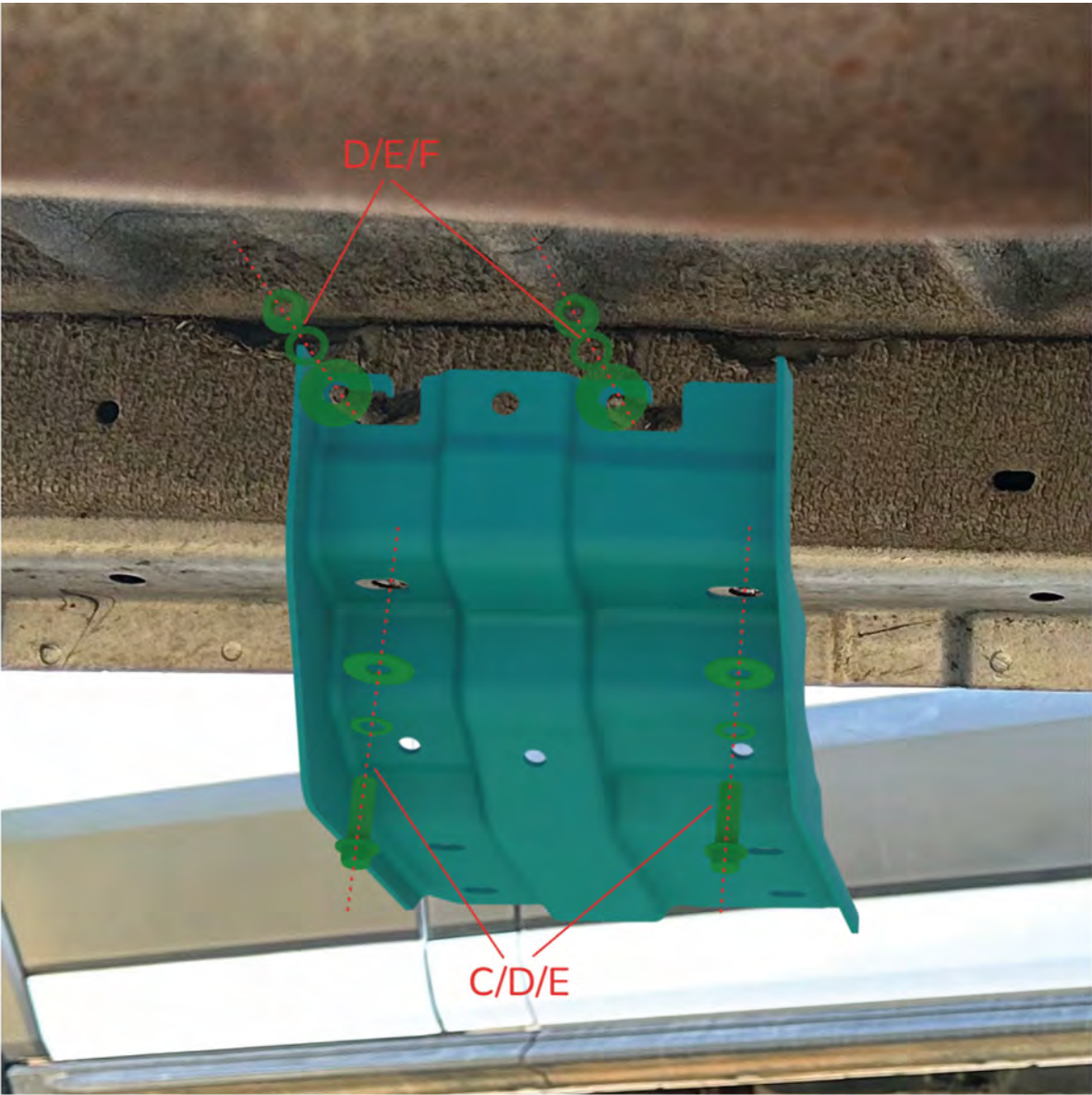


Step2: Same work for this 2 brackets (B)



Step3: Amount mid bracket (B) onto T-Slots, move T-Slots on the side of OEM Running Board (A), use







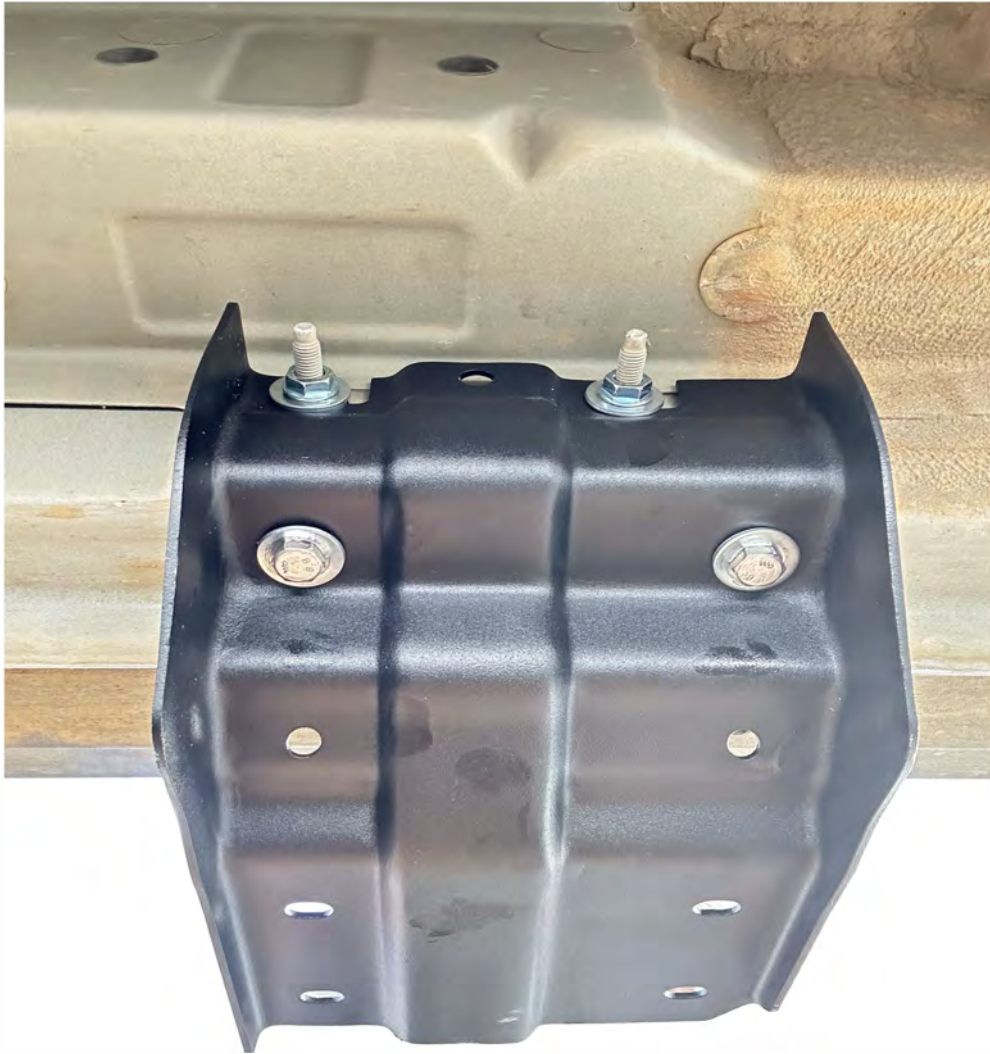
Step 1: Pre-tap the holes

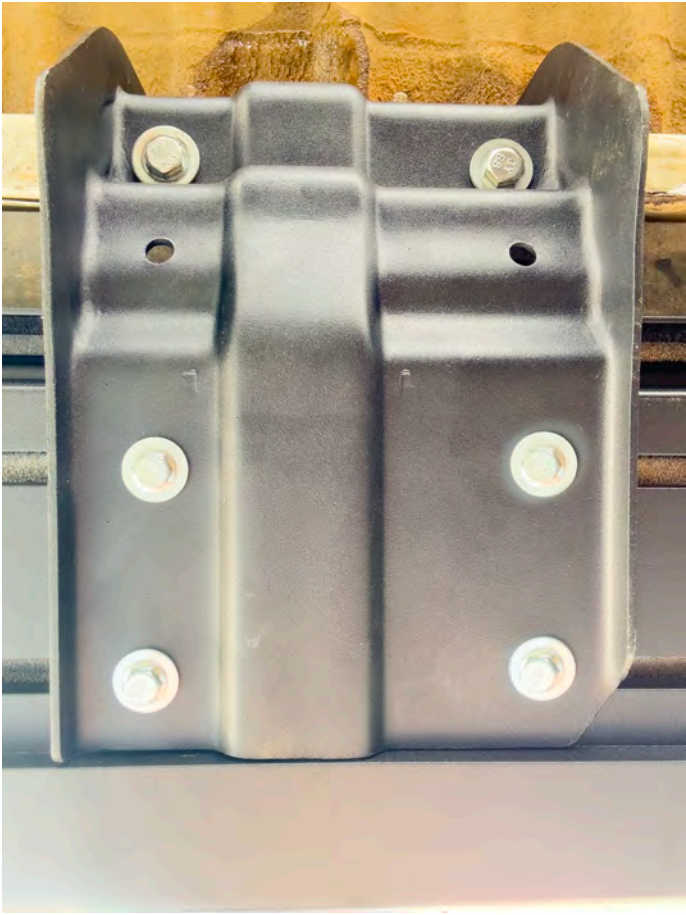
Use a high-torque wrench (or an impact wrench) to drive the provided self-tapping bolts into the chassis holes to cut the threads, then remove the bolts.



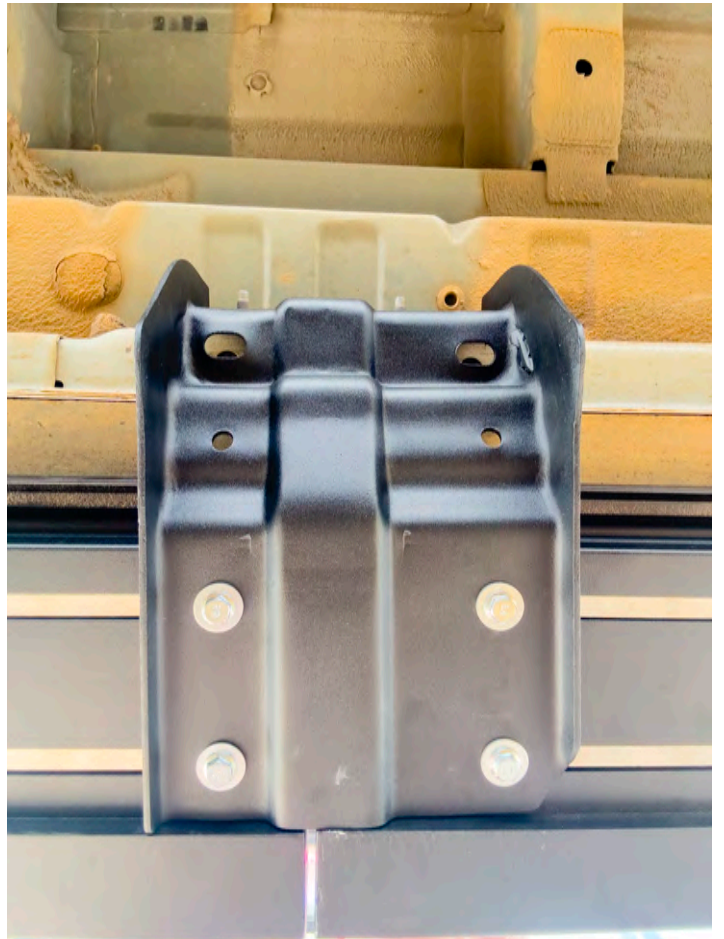
Step 2: Install the bracket

Align the bracket with the newly tapped holes and secure it in place.





(1)



(2)



(3)

