



# INSTALLATION INSTRUCTIONS

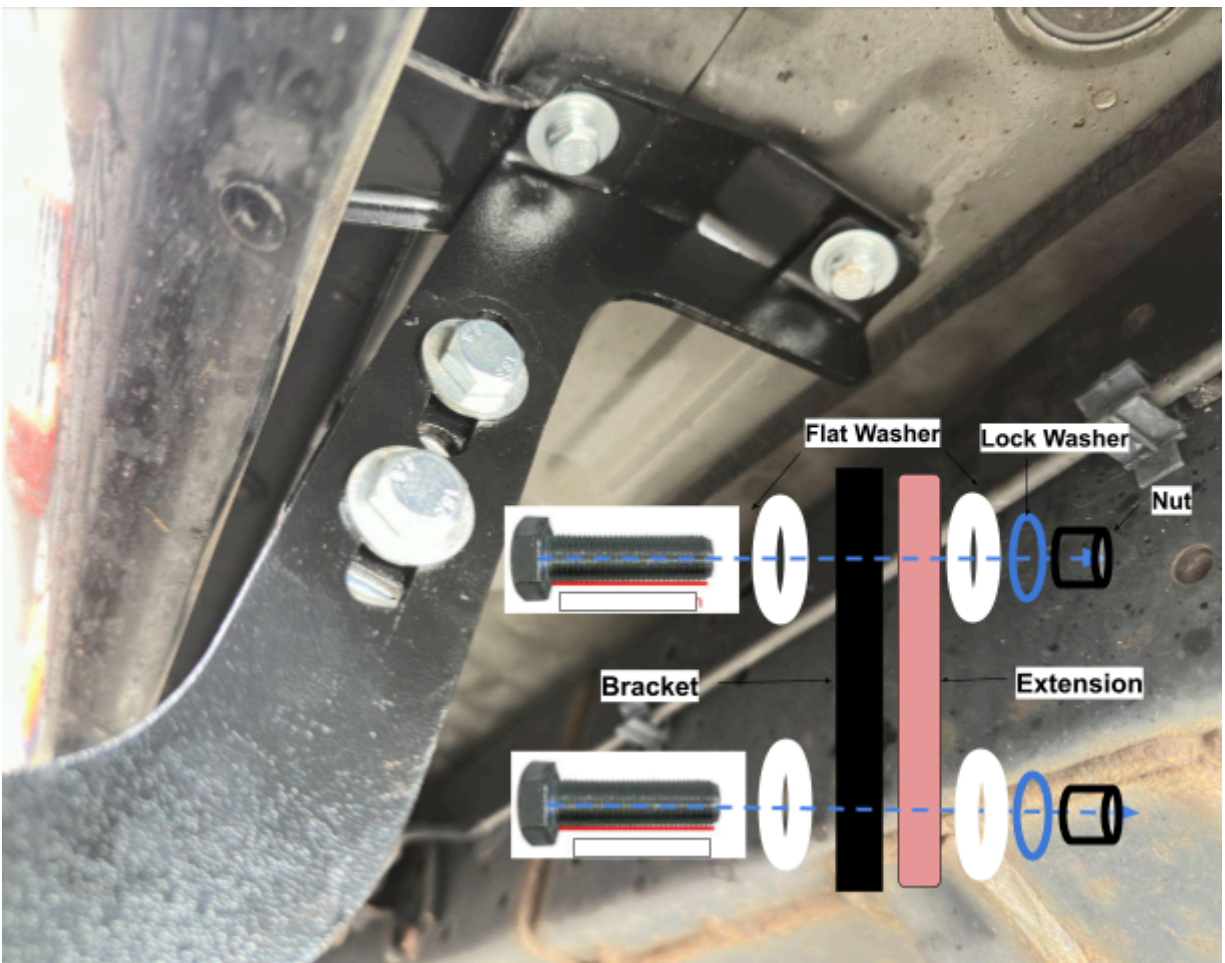
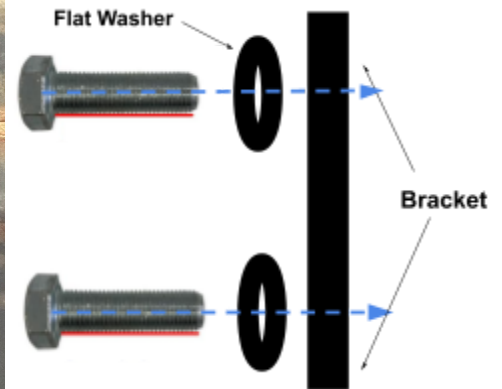
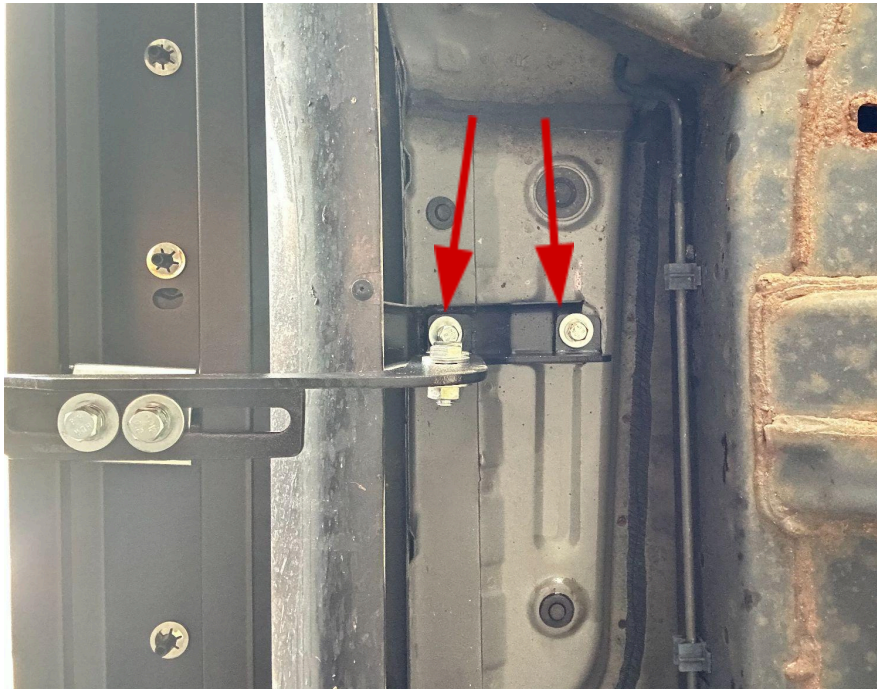
1151B





## Step 1:

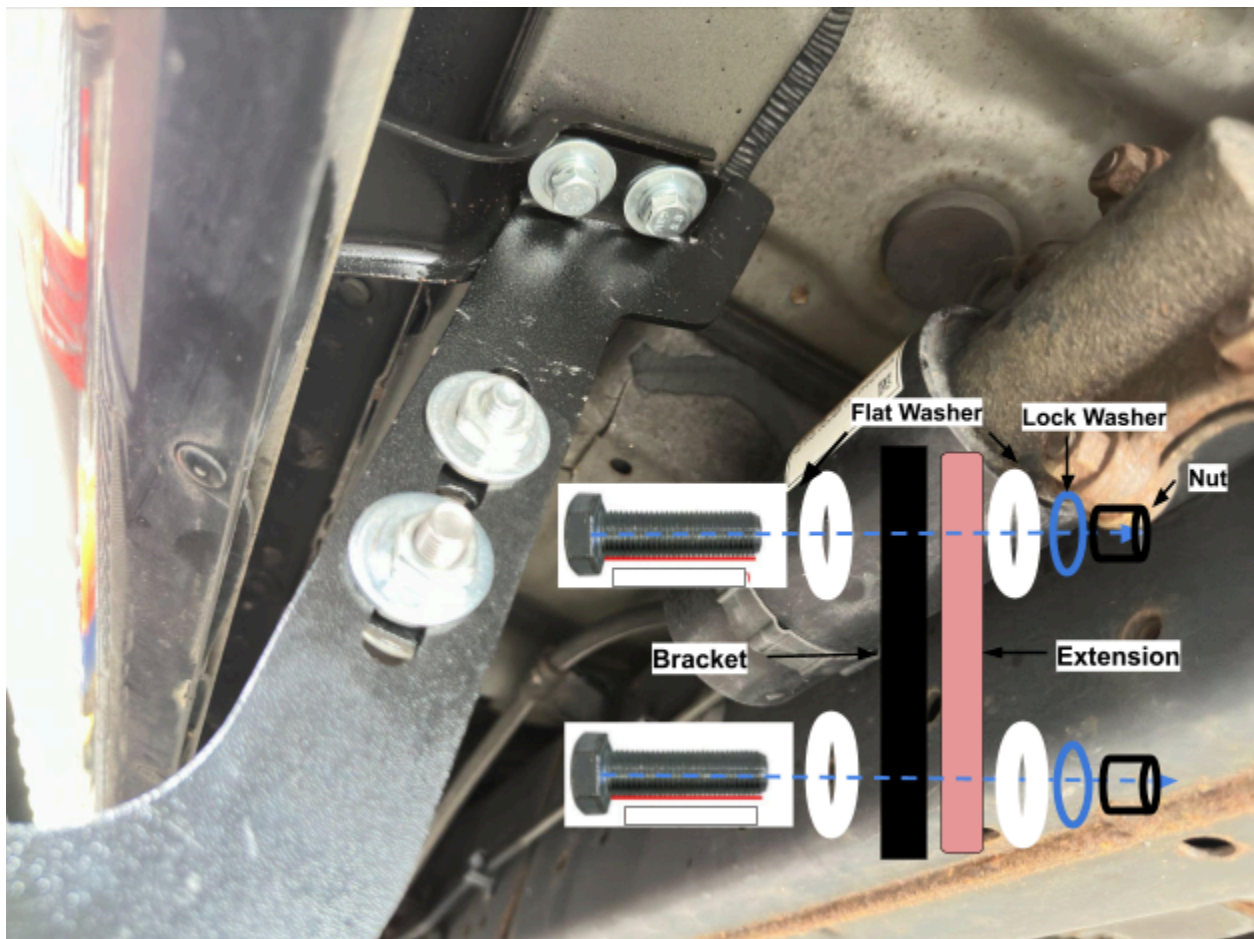
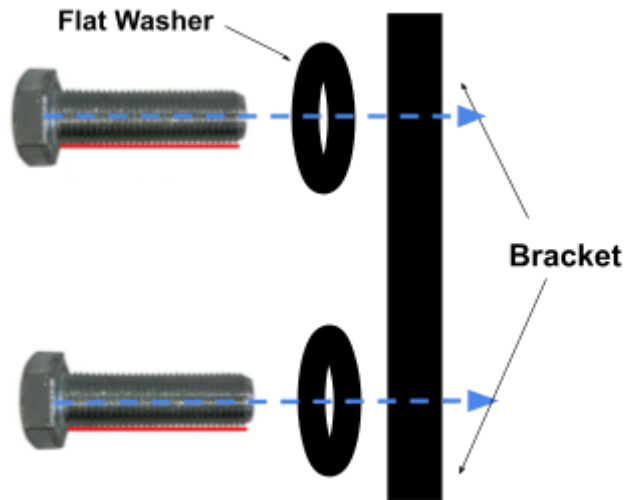
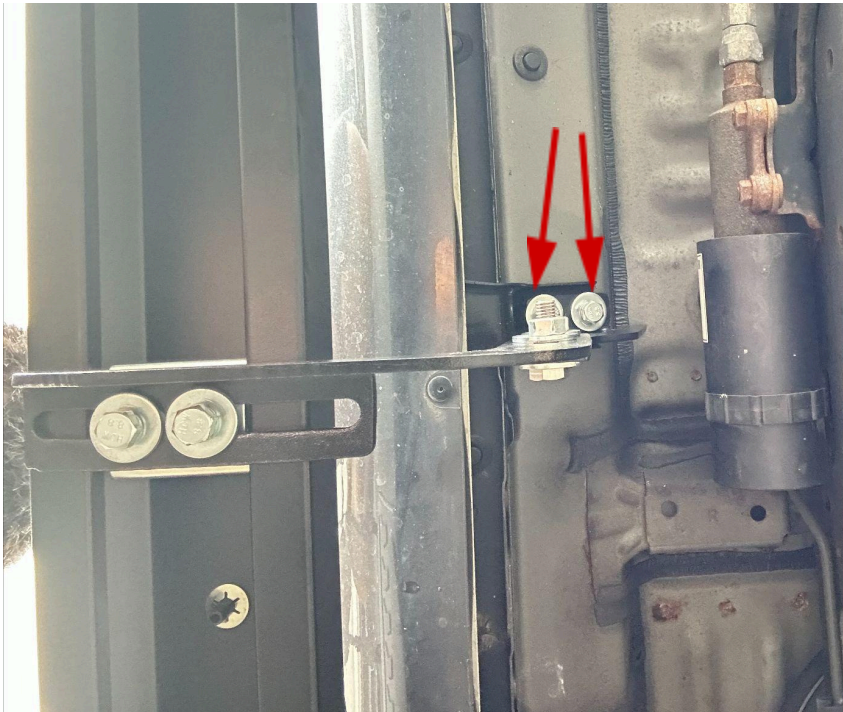
Mounting the **FRONT** bracket to the car shown in the picture.





## Step 2:

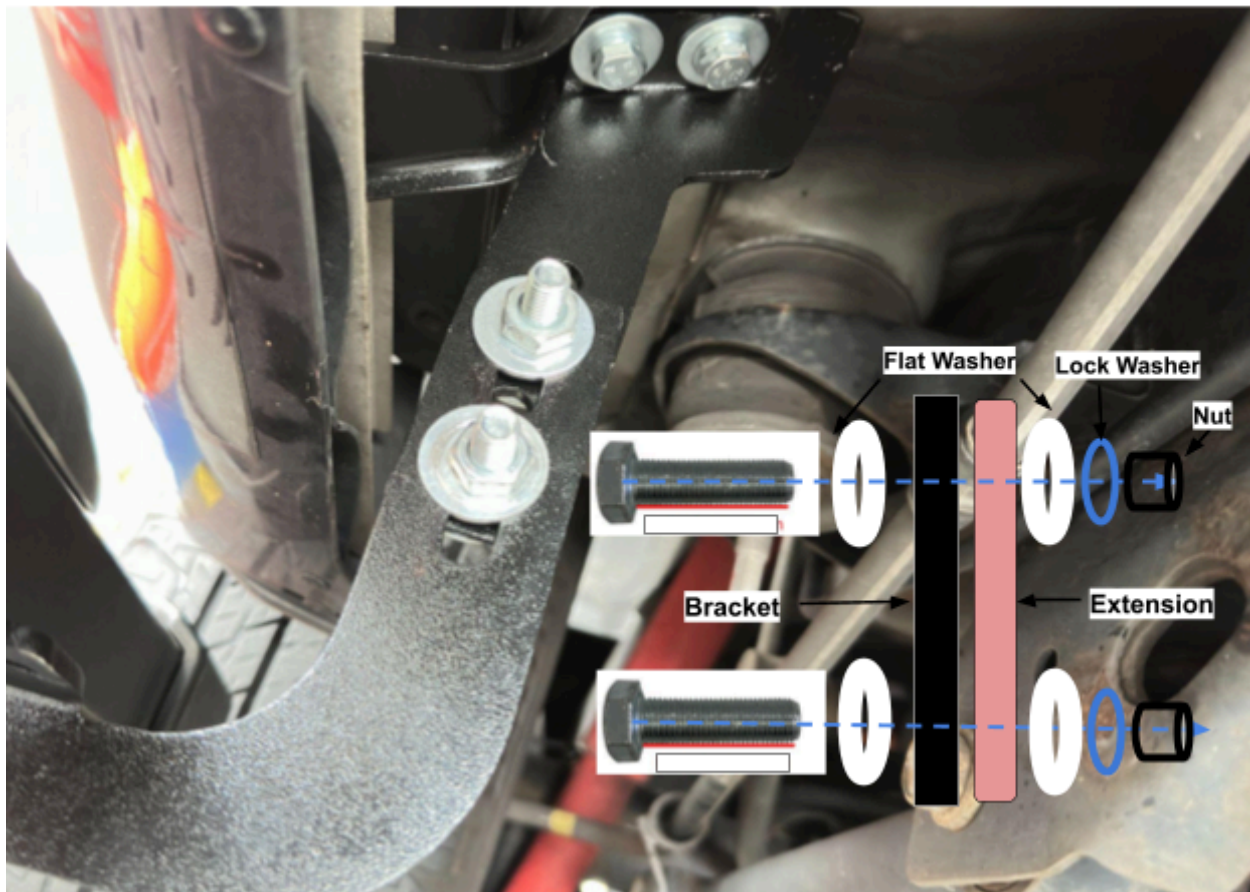
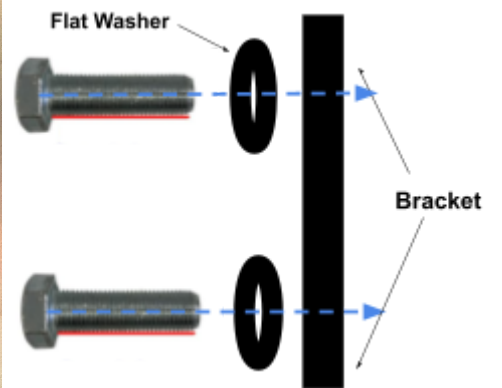
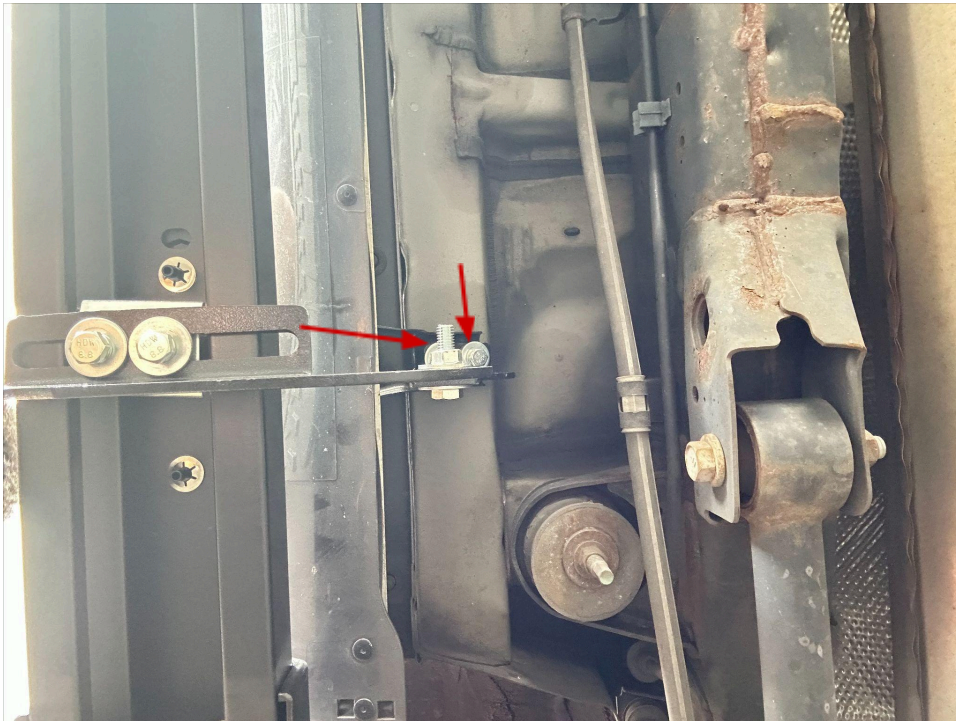
Mounting the **Middle** bracket to the car shown in the picture.





### Step 3:

Mounting the **Rear** bracket to the car shown in the picture



#### Step 4:

Connect the running board onto the brackets and adjust it to a proper location. Notice that the running board should be parallel to the body of vehicle. Tighten the bolt while adjust them to the best location.

#### Step 5:

Install the running board of the other side in same way as above.