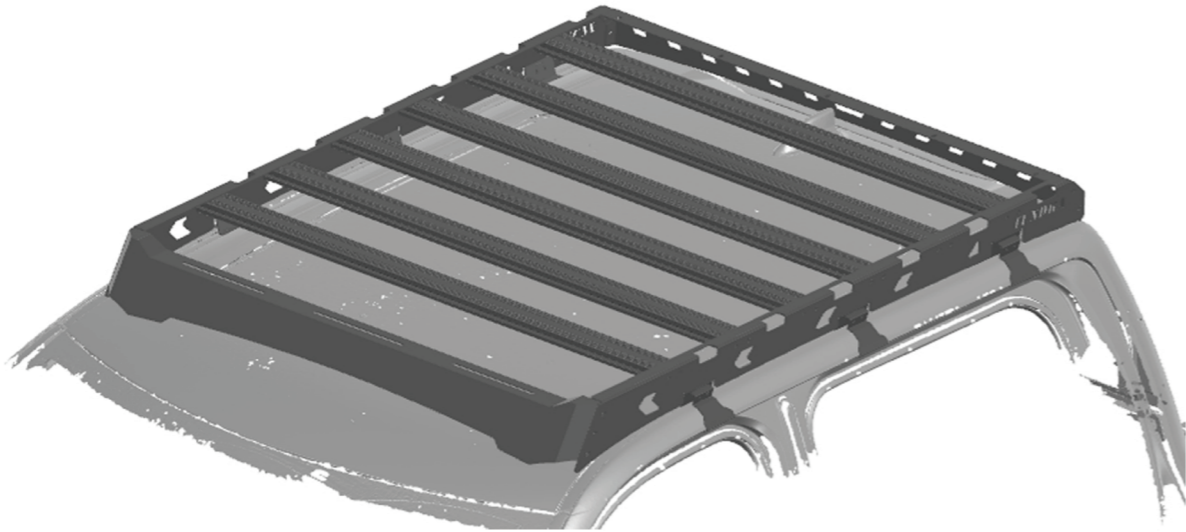





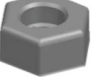
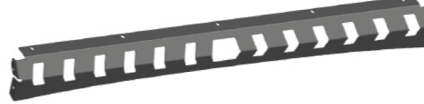







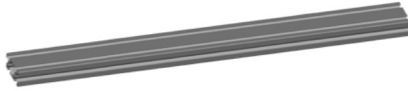



23+ TUNDRA BLADE PLATFORM INSTALLATION INSTRUCTIONS

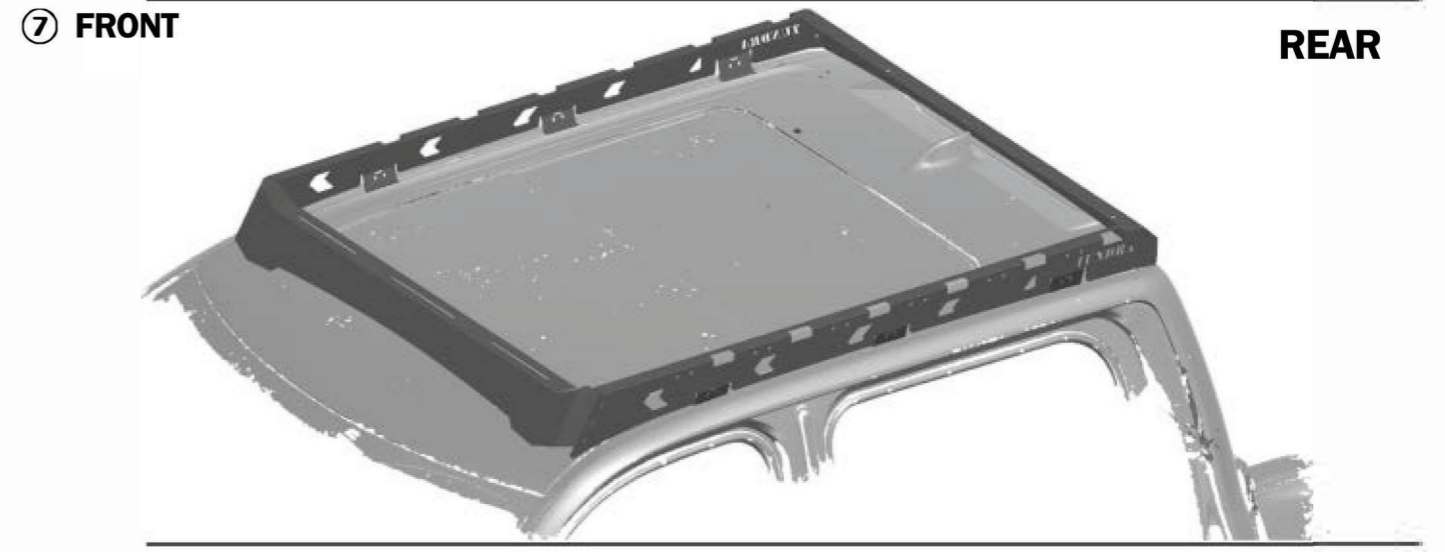
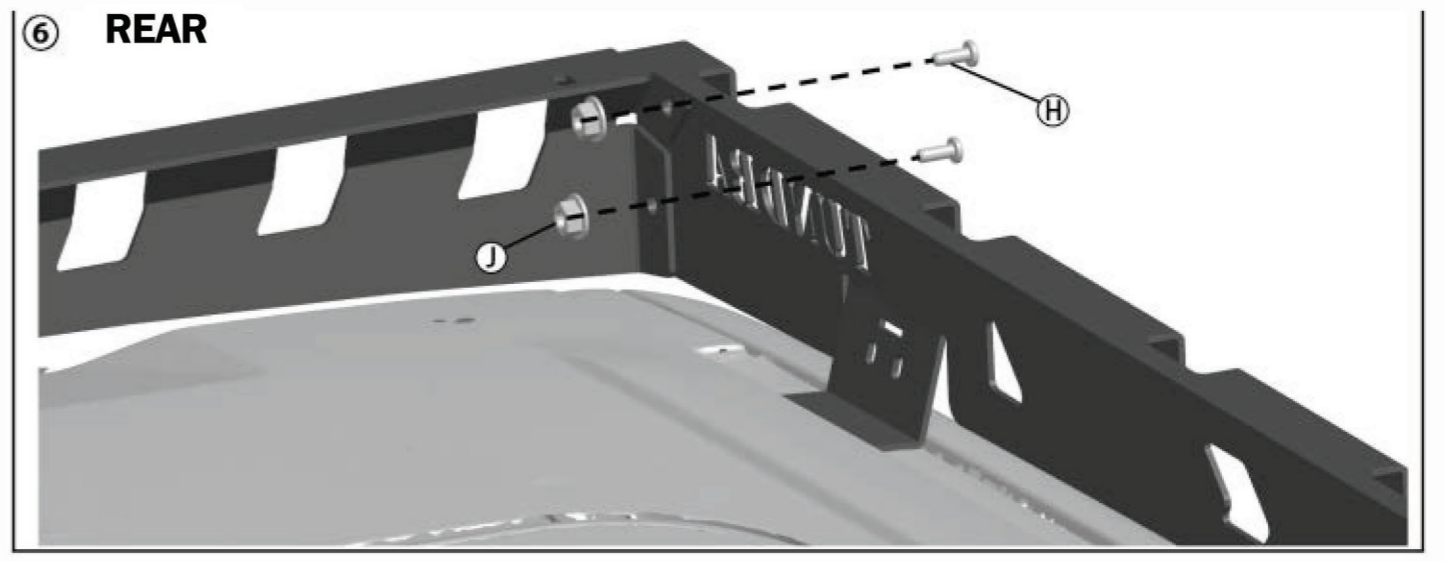
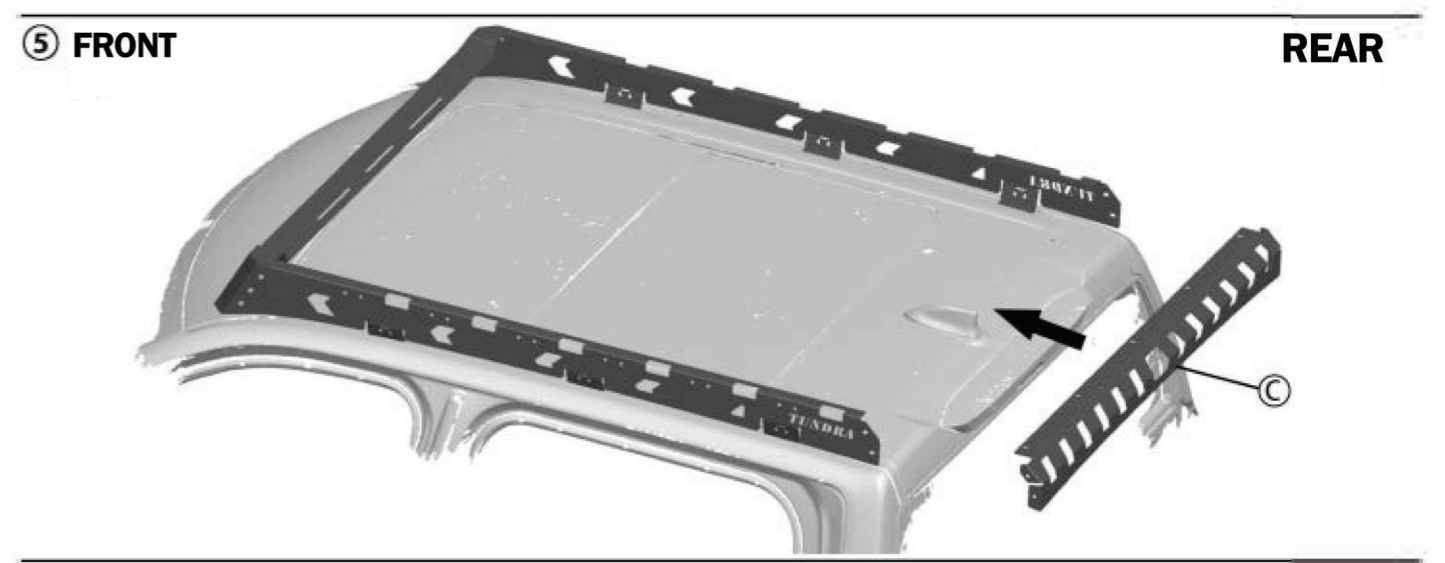
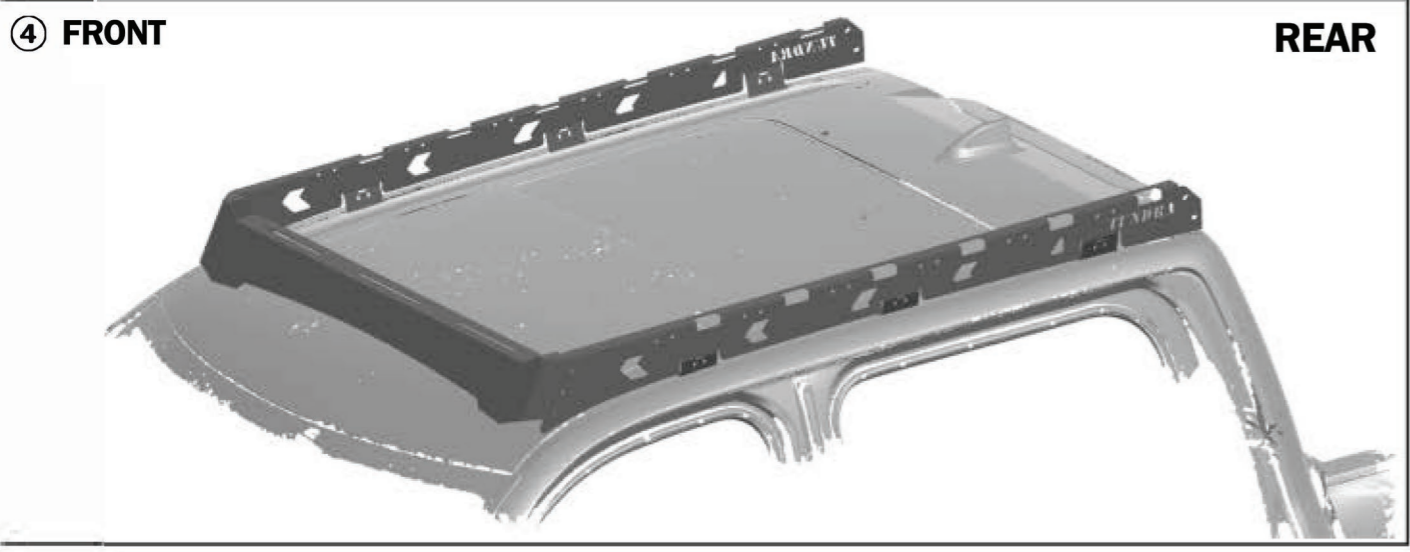
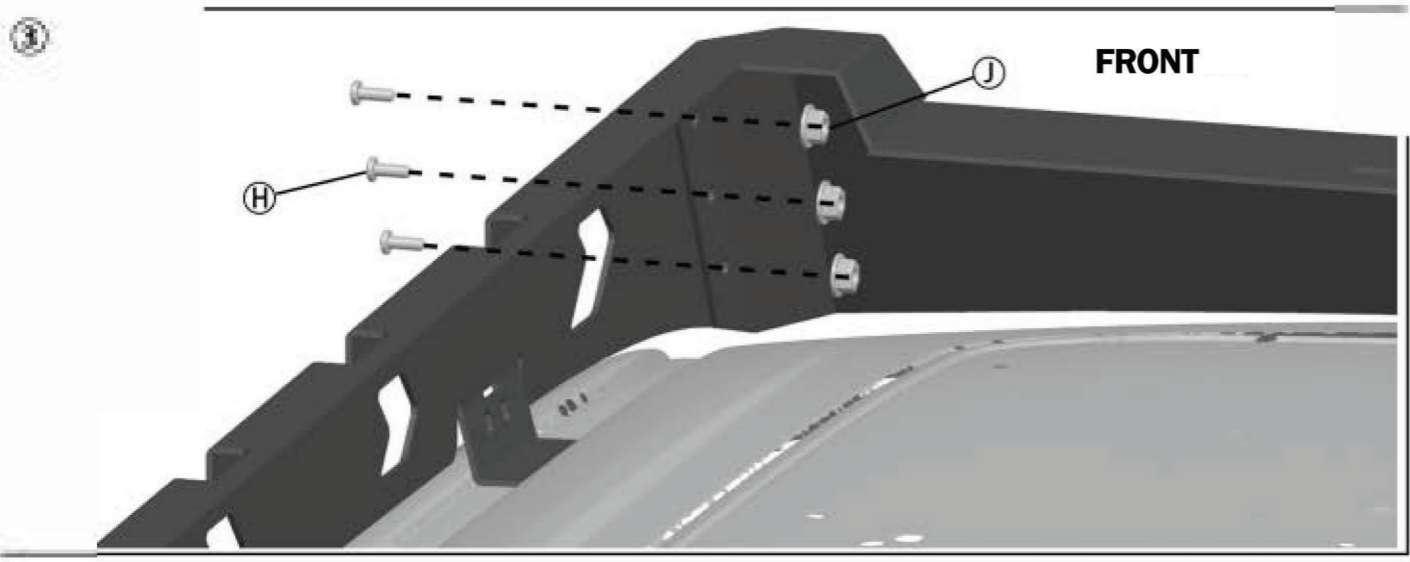
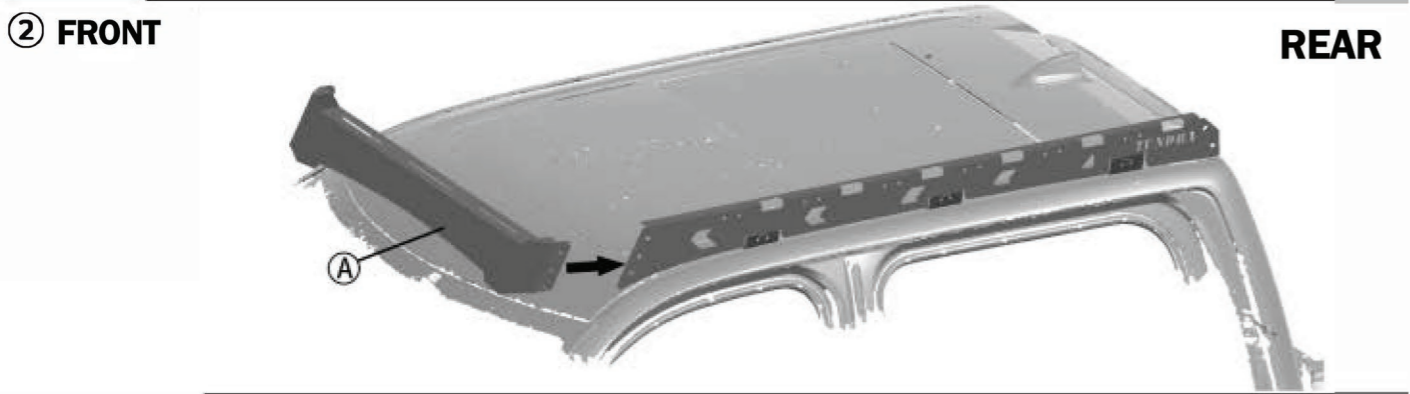
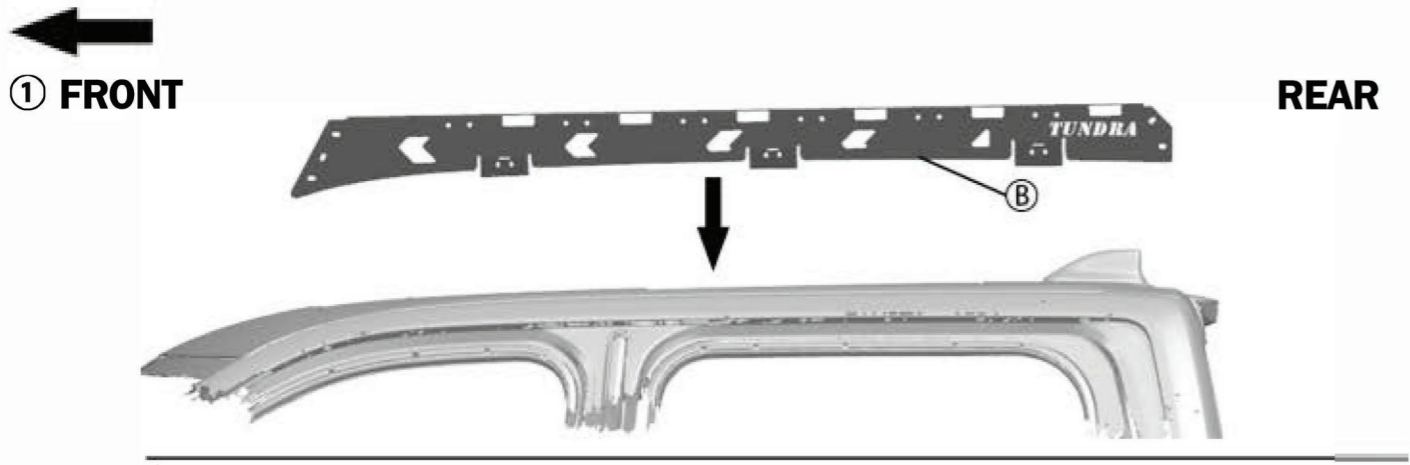


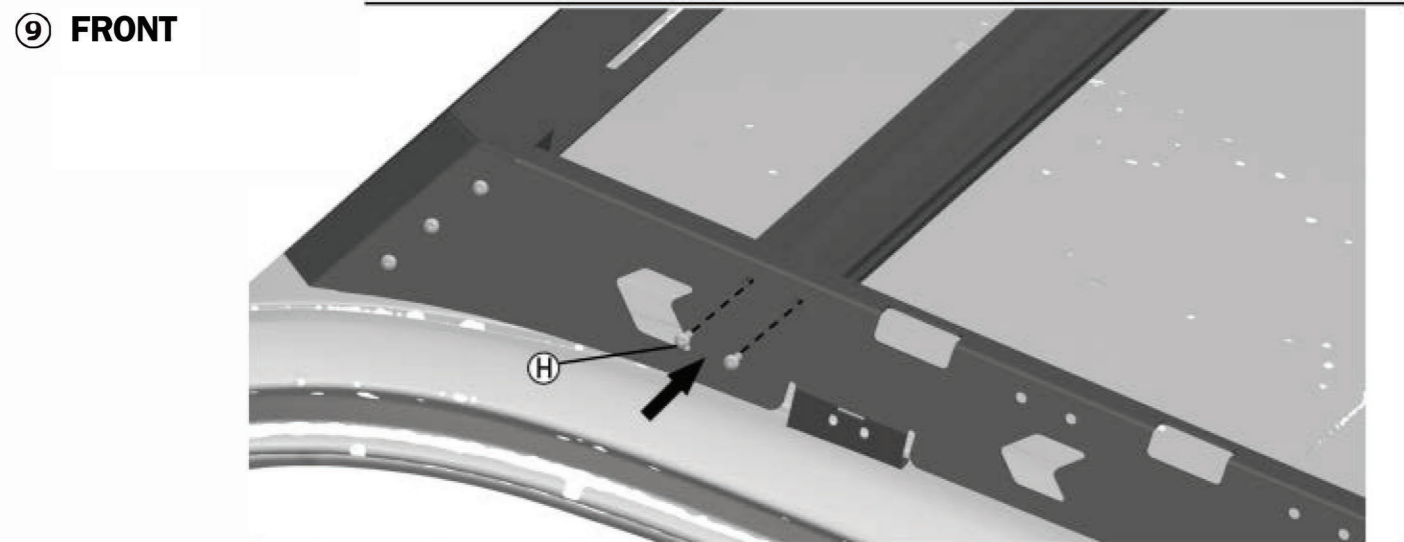
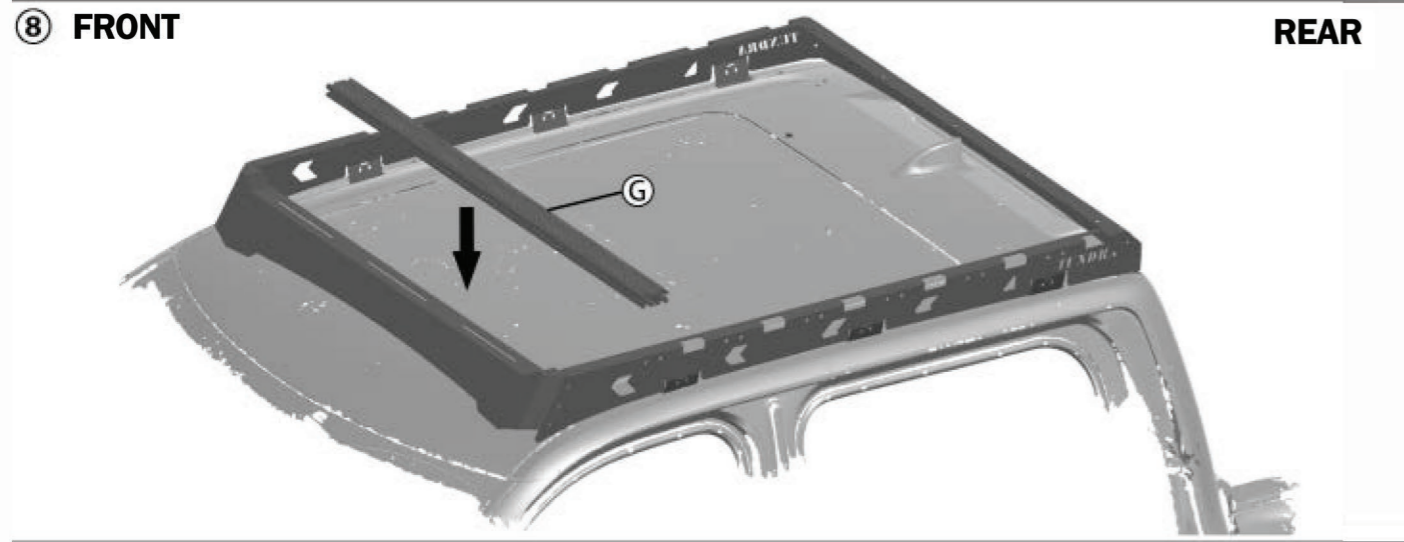
WARNINGS

IT IS CRITICAL THAT ALL PRODUCTS ARE PROPERLY AND SAFELY ASSEMBLED AND ATTACHED TO YOUR VEHICLE. IMPROPER ATTACHMENT CAN RESULT IN A CRASH AND COULD LEAD TO SERIOUS PERSONAL INJURY OR DEATH. ASSEMBLE AND SECURE THE PRODUCT TO YOUR VEHICLE, CHECK THE ATTACHMENTS BEFORE USE, AND PERIODICALLY INSPECT THE PRODUCT FOR ADJUSTMENT, WEAR AND DAMAGE. THEREFORE, IT IS IMPORTANT THAT YOU READ AND UNDERSTAND ALL INSTRUCTIONS AND CAUTIONS ACCOMPANYING THE PRODUCT BEFORE INSTALLING OR USING IT. IF YOU DO NOT UNDERSTAND ALL OF THE INSTRUCTIONS AND PRECAUTIONS, OR IF YOU HAVE NO MECHANICAL EXPERIENCE AND ARE NOT FULLY FAMILIAR WITH THE INSTALLATION PROCEDURES, HAVE THE PRODUCT INSTALLED BY A PROFESSIONAL INSTALLER OR OTHER QUALIFIED PERSON.

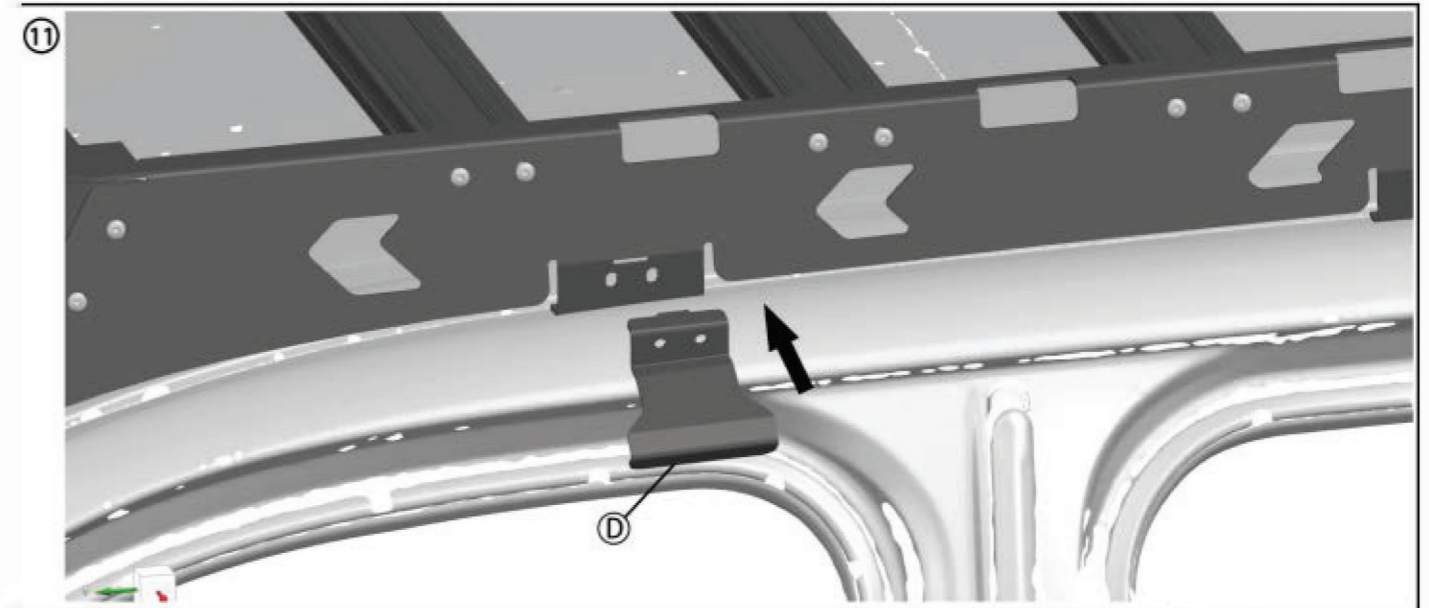
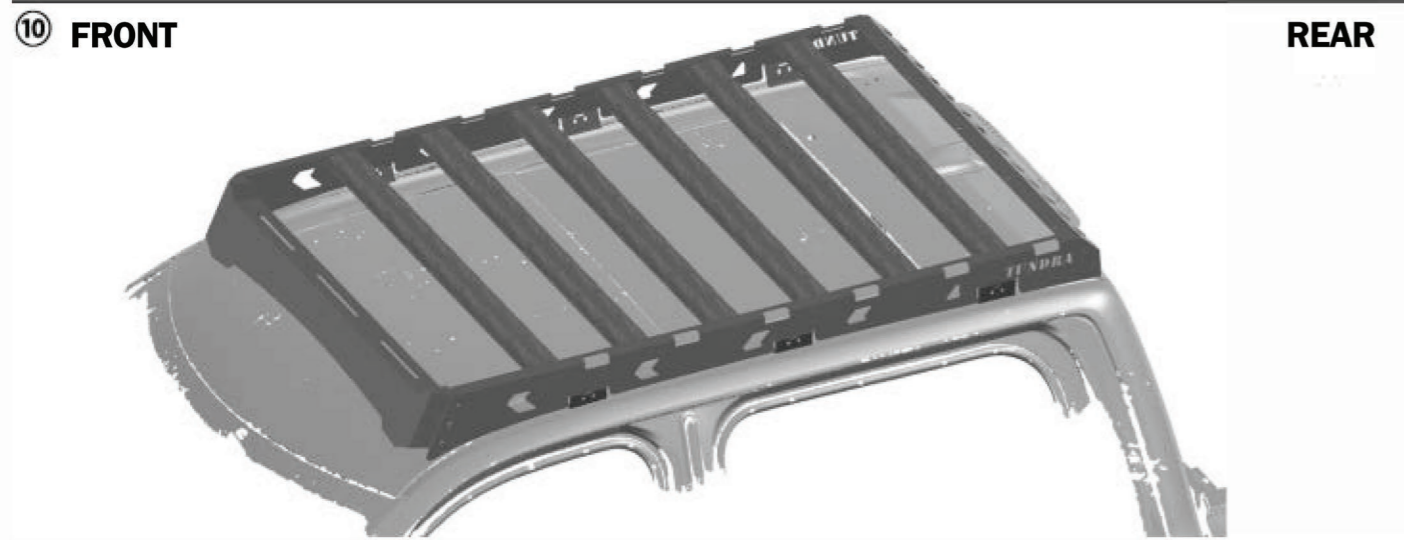
PARTS LIST

PARTS NO.	PICTURE	PCS	PARTS NO.	PICTURE	PCS
Ⓐ		1	Ⓘ	 M6*30	12
Ⓑ		LX1 RX1	⓵	 M8	10
Ⓒ		1	Ⓚ	 M8	34
Ⓓ		FLX1 FRX1	Ⓛ	 M6	12
Ⓔ		MLX1 MRX1	Ⓜ	 M8	34
Ⓕ		RLX1 RRX1	Ⓝ	 M6	12
Ⓖ		6	Ⓟ	 T45	1
Ⓗ	 M8*20	34	Ⓠ	 T30	1





DO NOT FULLY TIGHTEN THE SCREWS UNTIL ALL STEPS ARE COMPLETE



FRONT

