

# INSTALLATION INSTRUCTION

ITEM NO.: RG210301ZJ-2266B

DESCRIPTION: 21+ Nissan Rogue / 22+ Mitsubishi Outlander Bull Bar Brackets (1212) (69-H1)Attention:

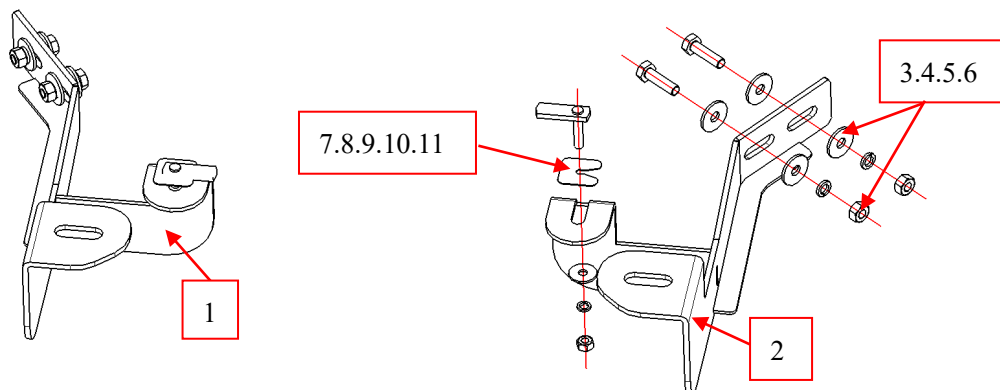
- Please read this installation menu before installing this part. Protect your car properly in case there is any scratch might happen.
- You may need to periodically to re-tighten all hardware for safety use after installation.
- Installation pictures are only for your reference, there might be some differences between pictures and real parts but no effect for your fitting.

**PART LIST**

NO.	NAME	QTY	REMARK	NO.	NAME	QTY	REMARK
1	Left Bracket	1		7	T-bolt3-1	2	M8
2	Right Bracket	1		8	PVC ClipΦ8	2	
3	Hex Head Bolts	4	M10*35	9	Spring Washer	2	Φ8
4	Spring Washer	4	Φ10	10	Large Washer	2	Φ8*25*2
5	Large Washer	8	Φ10*30*2.5	11	Hexagon Nut	2	M8
6	Hexagon Nut	4	M10	12			

The installation is the same on the left and right sides

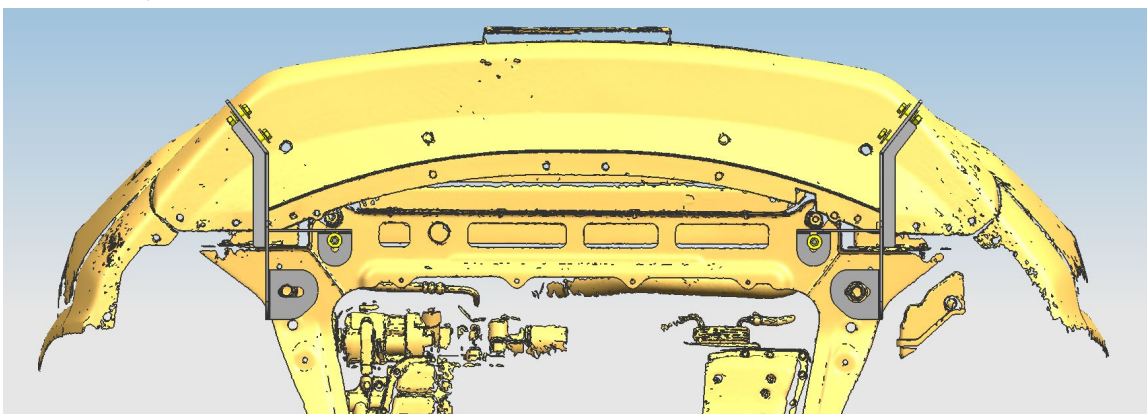
## INSTALLATION PICTURE



Step 1: Refer to Part List to check if all hard ware are included.

Step 2: Refer to the following pictures to assemble the side panel and brackets on the two main tubes .Step

3:Install the bar body on the bracket and adjust the mounting position of the bracket according to the position of the bar body



Step 4: Check if all hard ware are installed and then fasten all to complete the installation. .

Disclaimer: Caused due to improper installation initiates or some related problem and losses, are beyond our company's quality assurance.