

INSTALLATION INSTRUCTION

ITEM NO.: NX300150307ZJ 2269B

DESCRIPTION: 2015 NX300 F-SPORTS BRACKETS FOR 2.5 INCH FRONT BAR

Attention:

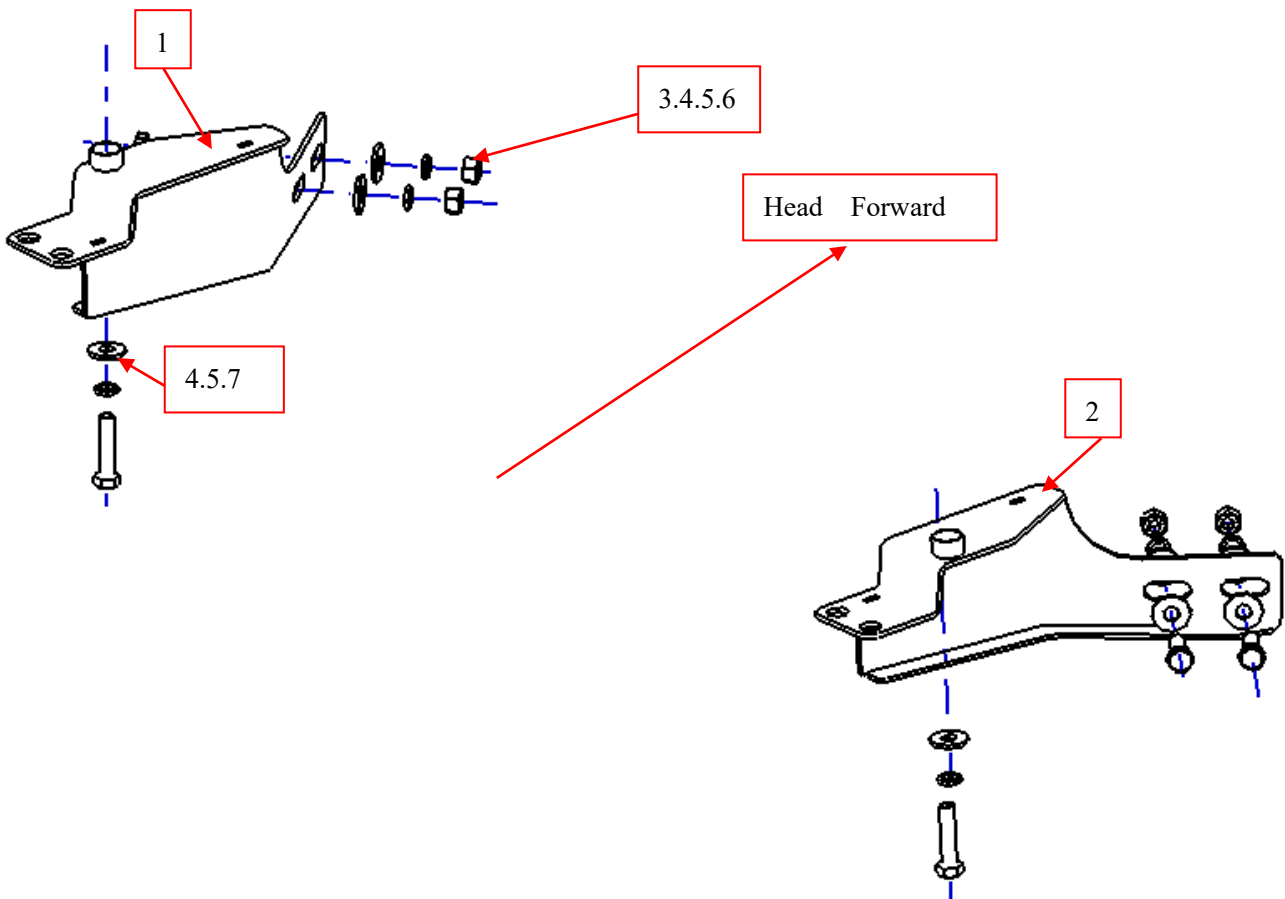
- Please read this installation menu before installing this part; Protect your car properly in case there is any scratch might have.
- You may need to periodically to re-tighten all hardware for safety use after installation.
- Installation pictures are only for your reference, there might be some differences between pictures and real parts but no effect for your fitting.

PART LIST

No.	Name	QTY	Remark	No.	Name	QTY	Remark
1	Bracket(L)	1		4	Spring Washer	6	Φ12
2	Bracket (R)	1		5	Large Washer	10	Φ12x30x3.0
3	Hexagon Nut	4	M12	6	Hexagon Screws	4	M12*35
				7	Hexagon Screws	2	M12*1.25*50

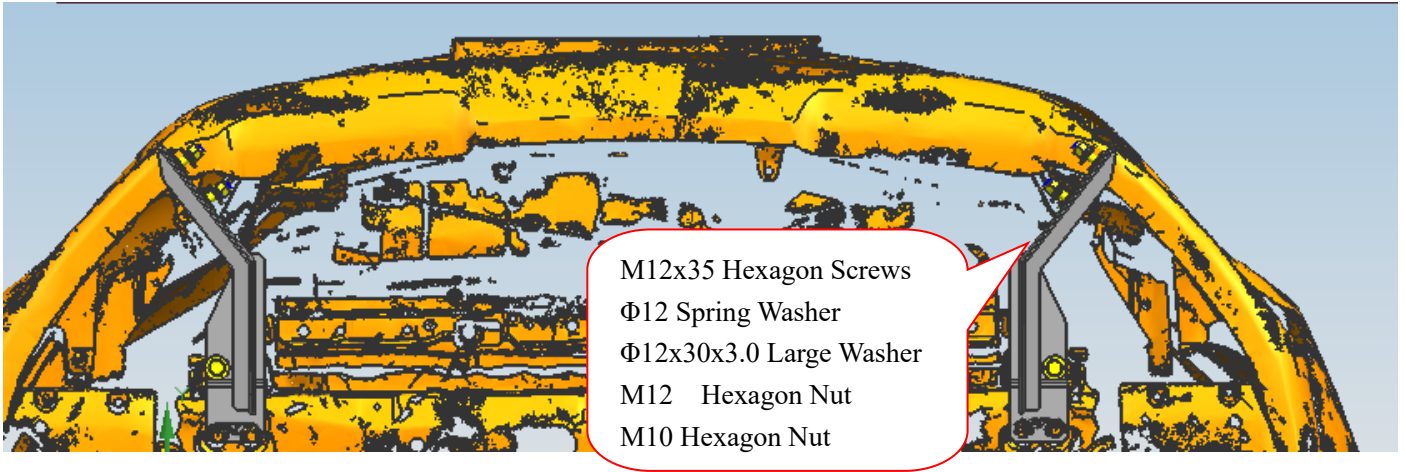
NOTE: TWO BRACKETS FITMENT ARE THE SAME

INSTALLATION PICTURE



Step 1: Refer to the Part list to check if all the hardware are included.

Step 2: Refer to the following picture, and then install the left and right mounting brackets with standard parts, but do not tighten.



Step 3: Adjust the brackets and bar into suitable position, check if all hard ware are installed and tighten up.

Step 4: Complete the installation.

Disclaimer: Caused due to improper installation initiates or some related problem and losses, are beyond our company's quality assurance.