

INSTALLATION MANUAL



Product No.WRL1801013

Product name: J L, JT Bumper runner with LED

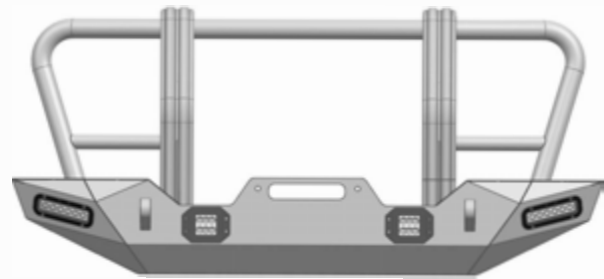
1. NOTES



1. To facilitate your installation, please read the instruction manual of the product carefully before installation; pay attention to protect the vehicle surface during installation to avoid scratches.
2. Please check regularly whether all accessories connected to the car are loose to ensure safe use.
3. All pictures in this manual are for reference only. The pictures may be different from the actual items, but the installation method is the same.

2. ESSENTIAL ACCESSORIES

PACKAGE LISTING	
1.	Bumper complete view
2.	Standard accessory kit
2.1	Hex head nut X4
2.2	Flat washer X8
2.3	Elastic washer
2.4	Hex bolt M10*35 X4
3.	Large tow eye (load:4.75T) X2



1



2.1



2.2



2.3



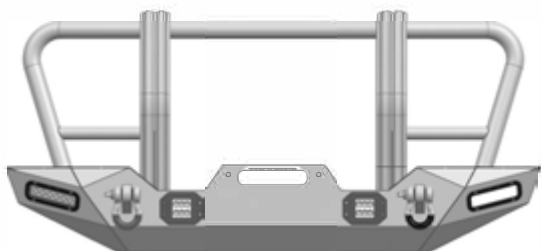
2.4



3.

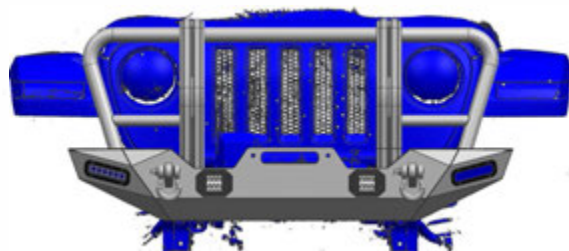
3. Installation diagram

1



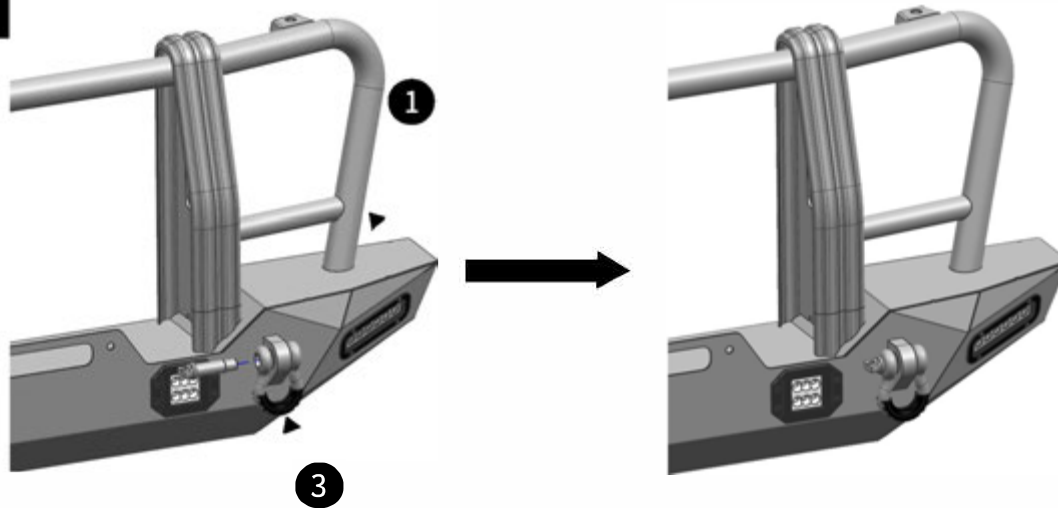
Final installation effect picture ①

2

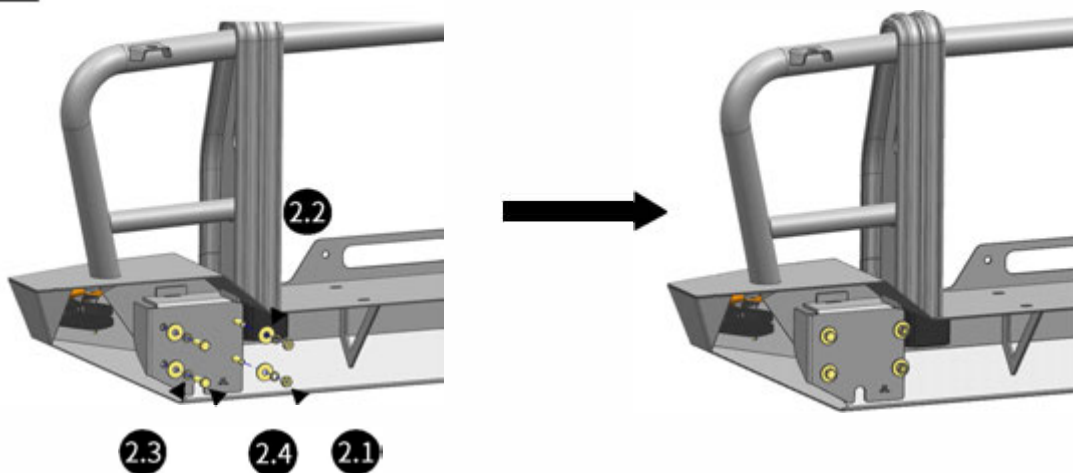


Final installation effect picture ②

3



4



5

