

Installation:

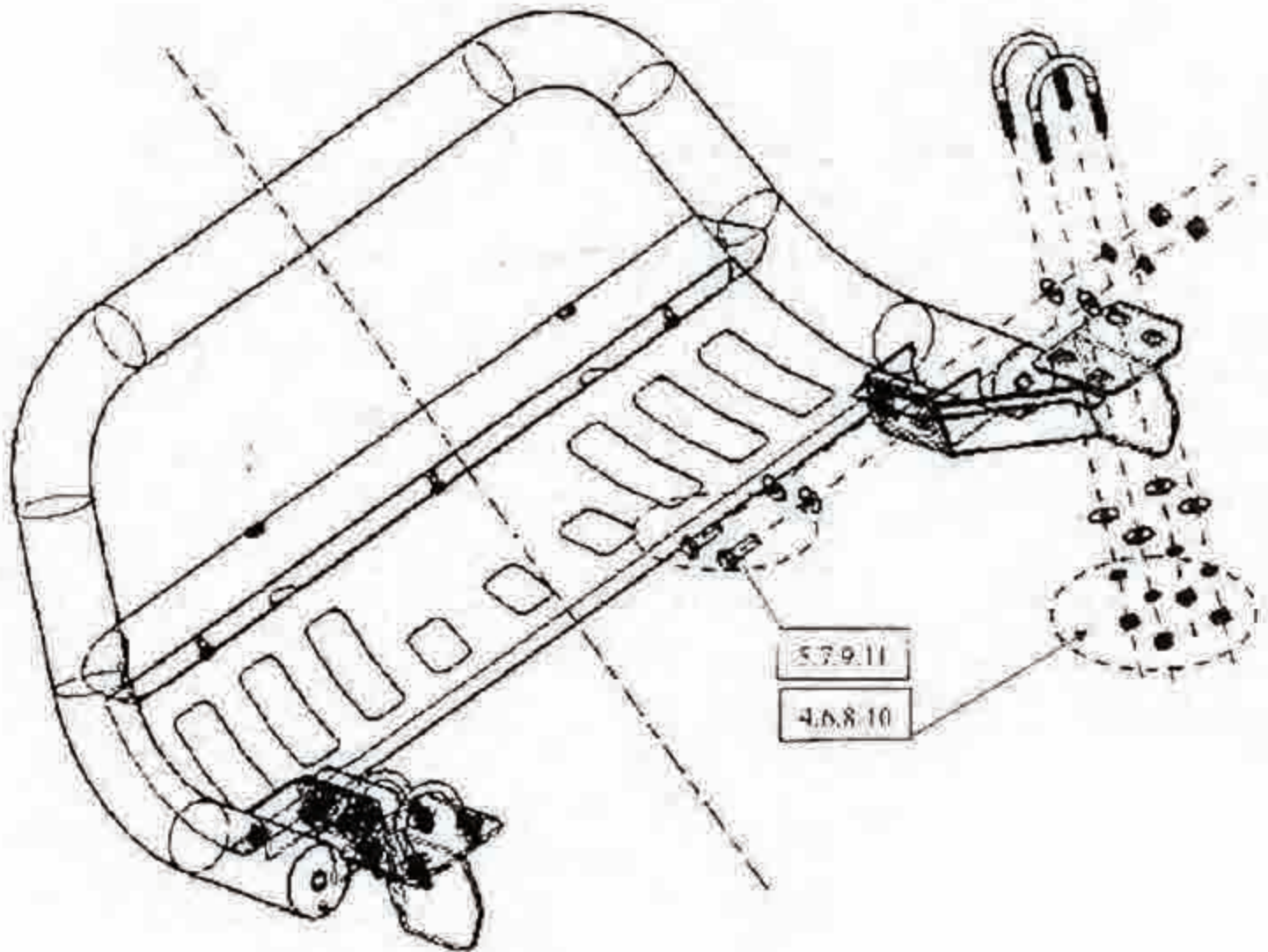
Depending on the vehicle, it may be necessary to cut a part of the plastic shroud to allow bracket access.

You may need to periodically tighten all hardware for safety use after installation.
See installation photos as follows:

Part List

- | | |
|------------------|-------------------|
| 1. Bull Bar | 7. Large Washers |
| 2. Left Bracket | 8. Spring Washers |
| 3. Right Bracket | 9. Hexagon Nuts |
| 4. U Bolts | |
| 5. Hexagon Bolts | |
| 6. Large Washers | |

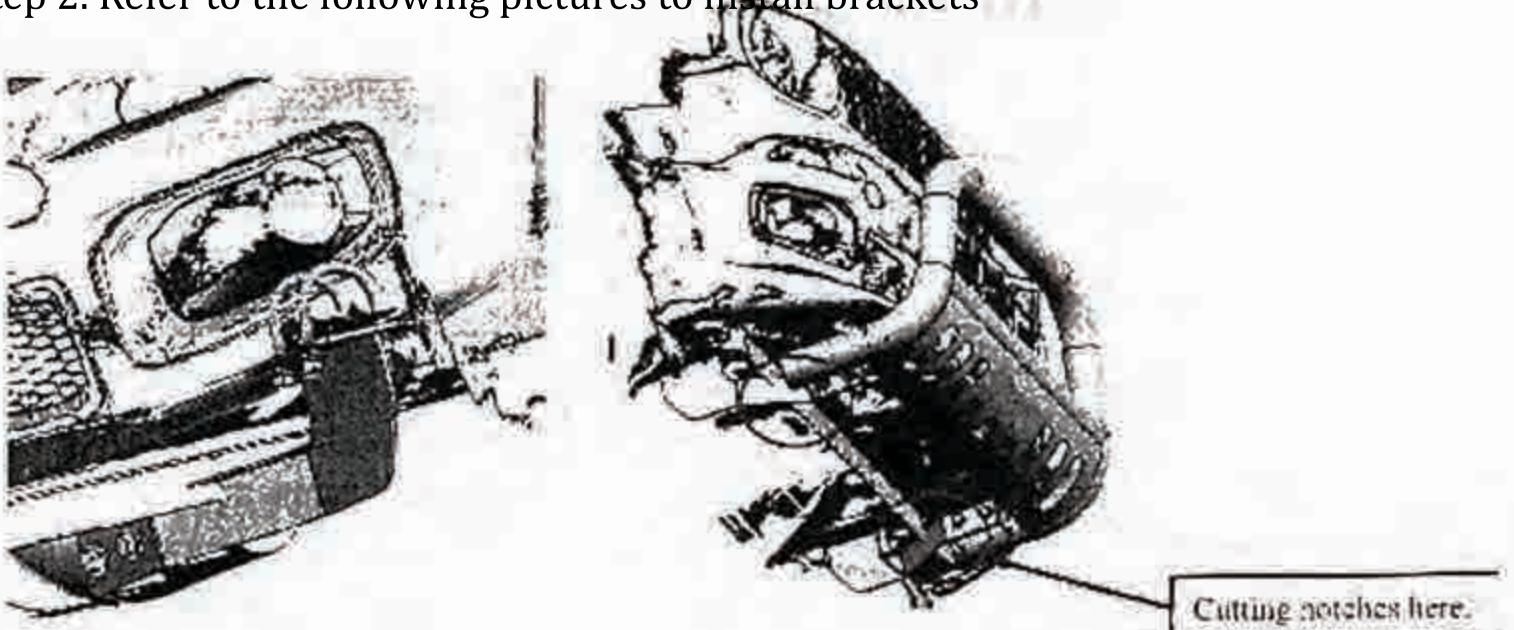
Installation Picture



Installation Procedures

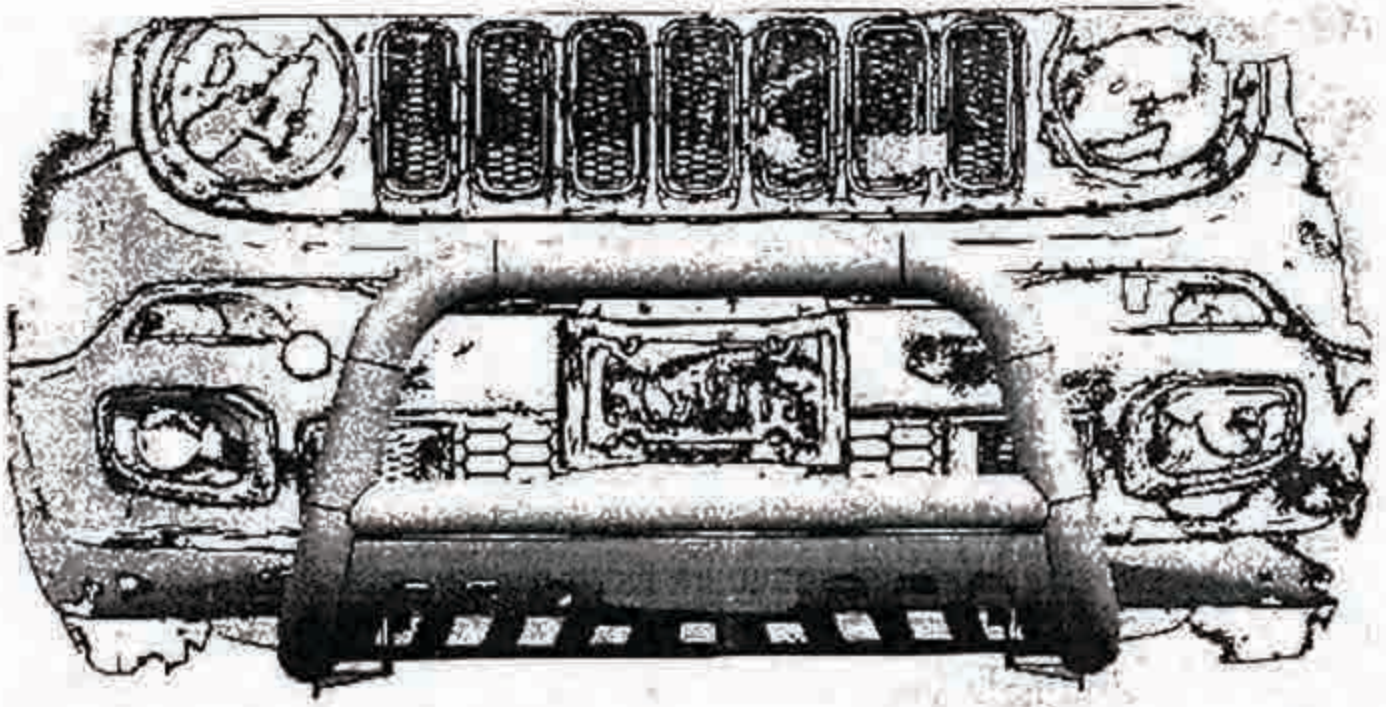
Step 1. Refer to parts list to check if all hardware are included.

Step 2. Refer to the following pictures to install brackets



Step 3. Install the bull bar on the brackets and then make the necessary adjustments.

Step 4. Check if all hardware are installed and then fasten all to complete installation.



Disclaimer: Damage caused due to improper installation would be beyond our company's quality assurance.

