

INSTALLATION INSTRUCTION

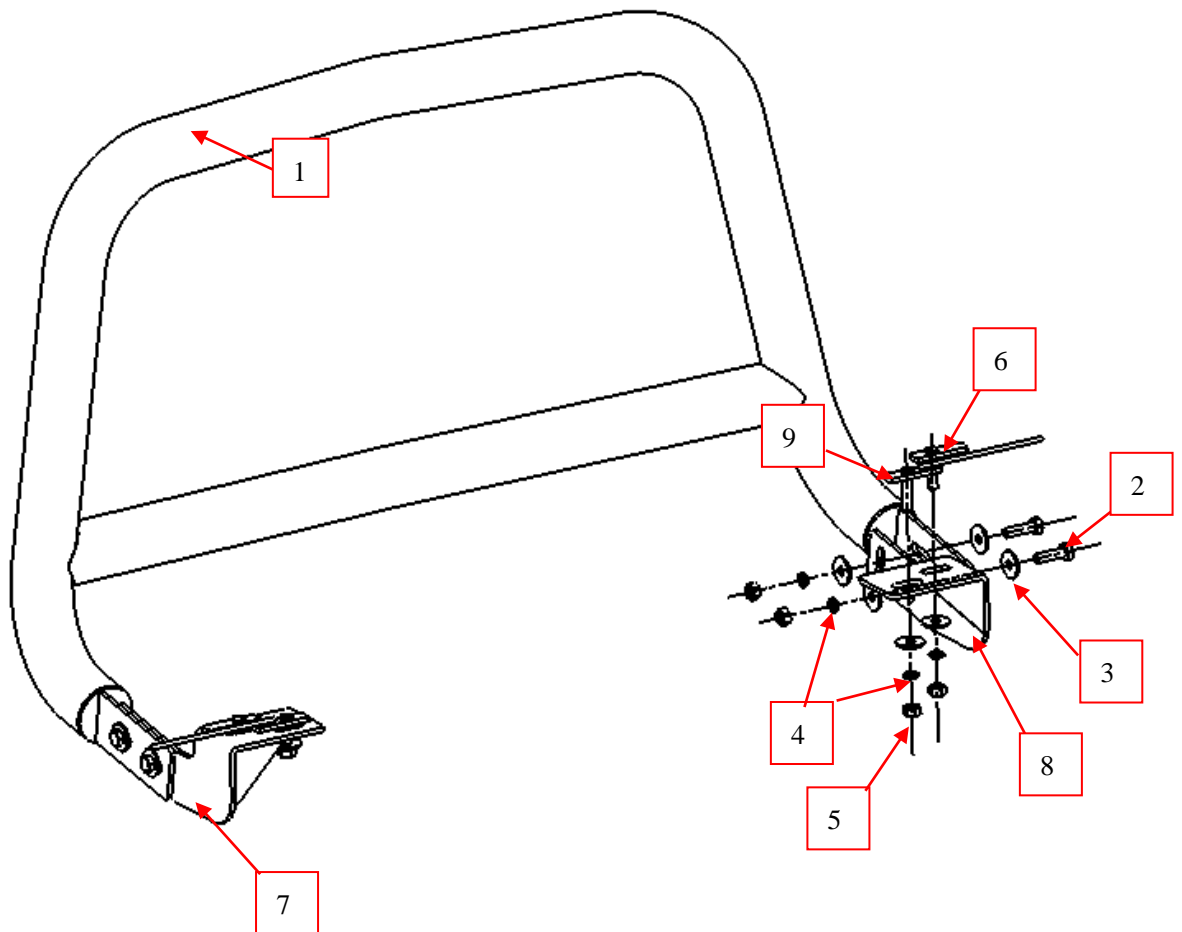
Attention:

- Please read this installation menu before installing this part. Protect your car properly in case there is any scratch might happen.
- You may need to periodically to re-tighten all hardware for safety use after installation.
- Installation pictures are only for your reference, there might be some differences between pictures and real parts but no effect for your fitting.

PART LIST

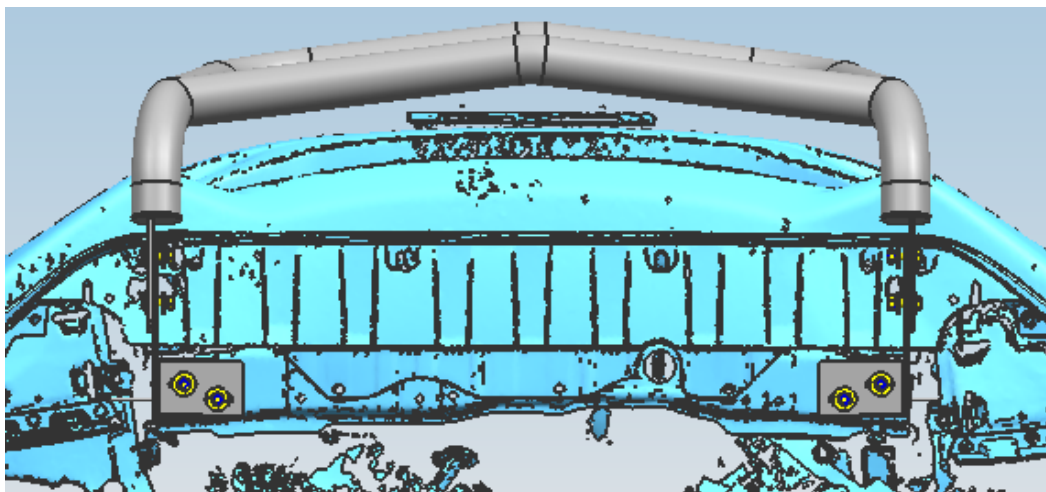
NO.	NAME	QTY	REMARK	NO.	NAME	QTY	REMARK
1	Bull Bar	1		6	T-bolt9-1	2	M10*40
2	Hexagon Bolt	4	M10x35	7	Left Bracket	1	
3	Large Washer	12	$\phi 10 \times 30 \times 2.5$	8	Right Bracket	1	
4	Spring Washer	8	$\phi 10$	9	T-bolt	2	M10*40
5	Hexagon Nut	8	M10				

INSTALLATION PICTURES



Step 1: Refer to Part List to check if all hard ware are included.

Step 2: Refer to the following pictures to assemble the side panel and brackets on the two main tubes .Step 3:Install the bar body on the bracket and adjust the mounting position of the bracket according to the position of the bar body



Step 4: Check if all hard ware are installed and then fasten all to complete the installation.

Disclaimer: Caused due to improper installation initiates or some related problem and losses, are beyond our company' s quality assurance.