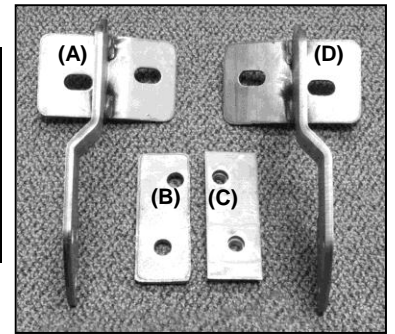




PARTS LIST:

1	Sport Bar	4	12-1.75mm x 30mm Hex Head Bolts
1	Passenger Side Mounting Bracket (D)	4	12mm Nylock Nuts
1	Driver Side Mounting Bracket (A)	4	12mm Lock Washers
1	Passenger Side Double Nut Plate (C)	4	12-1.75mm x 35mm Hex Head Bolts
1	Driver Side Double Nut Plate (B)	12	12mm ID x 37mm OD x3mm Flat Washers



PROCEDURE:

1. REMOVE CONTENTS FROM BOX. VERIFY ALL PARTS ARE PRESENT. READ INSTRUCTIONS CAREFULLY BEFORE STARTING INSTALLATION.
2. From underside of vehicle, remove the passenger and driver side rubber shroud located by the bumper air inlet (Figure 1).
3. Through bumper air inlet, insert passenger side Double Nut Plate through existing hole on the radiator support (Figure 2). **NOTE:** Use the larger round hole on the radiator support to insert Double Nut Plate.
4. Center holes on the Double Nut Plate with holes on the radiator support.
5. Hang passenger side Mounting Bracket into position by partially treading (1) 12-1.50mm x 35mm Hex Head Bolt, (1) 12mm Flat Washer, and (1) 12mm Lock Washer on the inner side of the Mounting Bracket and trough already inserted Double Nut Plate (Figure 3). From underside of vehicle proceed to install another Bolt with Washer and Lock Washer on the outer side of the Mounting Bracket and trough Double Nut Plate. Do not tighten at this time.
6. Repeat steps 3-5 for driver side.
7. Position Bull Bar on the outer side of Mounting Brackets. Install Bull Bar onto Mounting Brackets using the included (4) 12-1.75mm x 30mm Hex Head Bolts, (4) 12mm Nylock Nuts, and (8) 12mm Flat Washers (Figure 4). Do not tighten at this time.
8. Level and adjust Bull Bar as desired; then tighten all hardware at this time.
9. Do periodic inspections to the installation to make sure that all hardware is secure and tight.

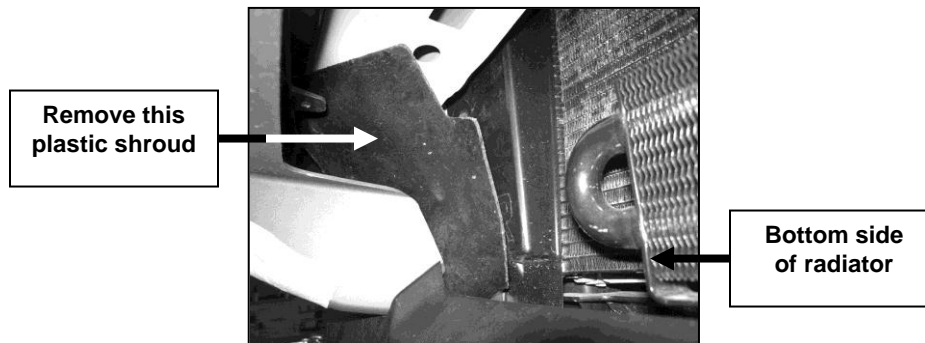


Figure 1

Passenger Side Shown

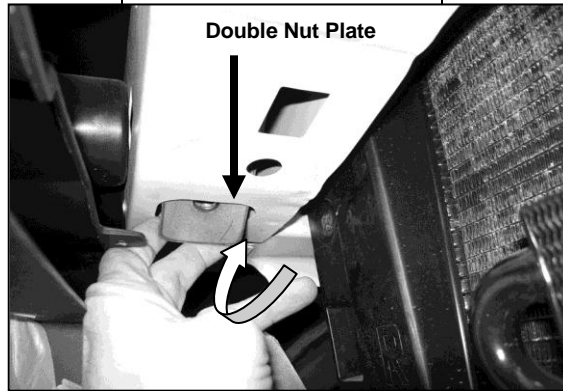
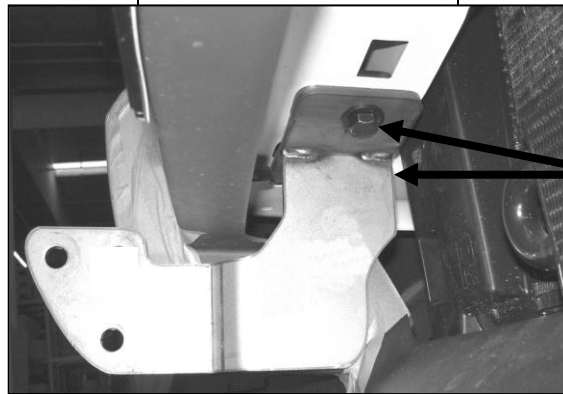


Figure 2

Passenger Side Shown



12mm Head Hex Bolt,
12mm Flat Washer, &
12mm Lock Washer

Figure 3

Passenger Side Shown

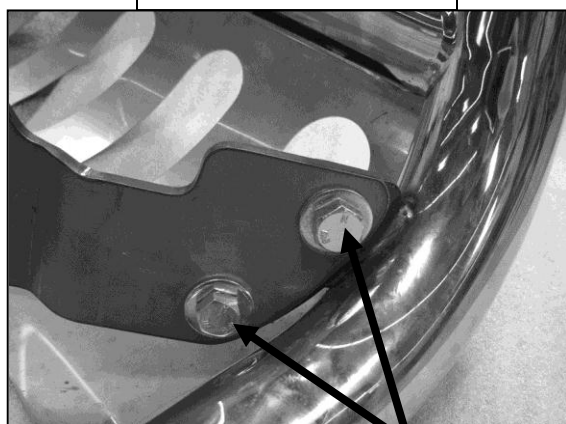


Figure 4

12mm Hex Head Bolts,
12mm Nylock Nuts, &
12mm Flat Washers

Installation Complete

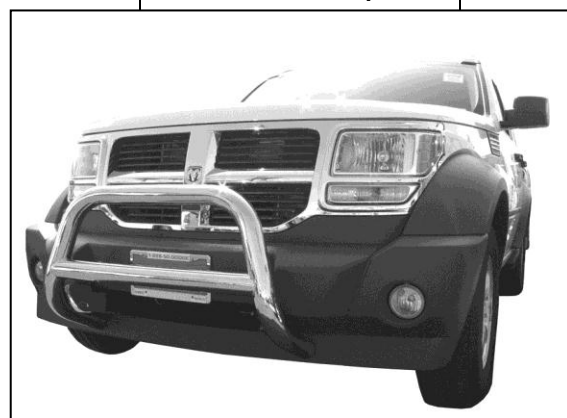


Figure 5