

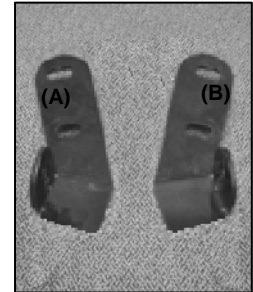
# INSTALLATION INSTRUCTIONS

PART#0454/1050/1175/0666

BULL BAR FOR RDX/CRV

## PARTS LIST:

1	Sport Bar	4	12-1.75mm x 35mm Hex Head Bolt
1	Driver Mounting Bracket (A)	4	12mm Nylock Nuts
1	Passenger Mounting Bracket (B)	8	12mm Flat Washer



## PROCEDURE:

1. REMOVE CONTENTS FROM BOX. VERIFY ALL PARTS ARE PRESENT. READ INSTRUCTIONS CAREFULLY.
2. Remove plastic shroud and place it on a working area. Using a hack saw; carefully cut the driver side marked area shown in Figure 5.
3. Reposition factory plastic shroud with fasteners removed in step 2.
4. Position Passenger Side Mounting Bracket as shown in Figure 2 and secure it with factory bolt removed in step 5. Do not tighten at this time.
5. Repeat step 4 for driver side.
6. Mount Sport Bar on the inner side of Mounting Brackets (Figure 4). Use the included (4) 12-1.75mm x 35mm Hex Head Bolts, (4) 12mm Nylock Nuts, and (8) 12mm Flat Washers to attach Sport Bar to both mounting brackets.
7. Once the Sport Bar is fully mounted on vehicle, level and adjust Sport Bar; then tighten all hardware at this time.
8. Do periodic inspections to the installation to make sure that all hardware is secure and tight.

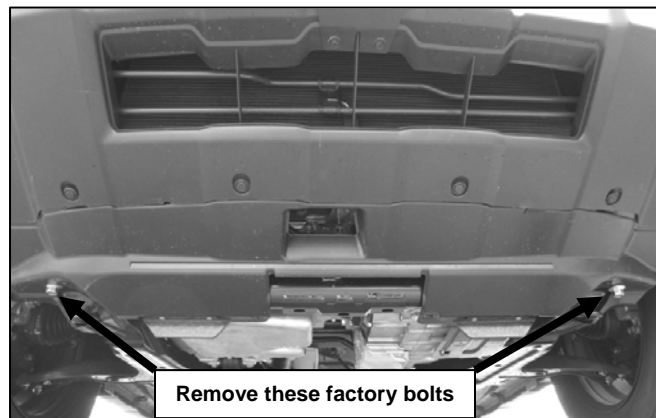
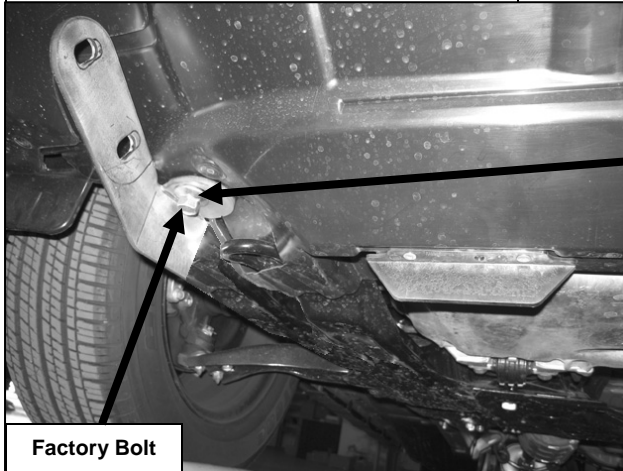


Figure 1

Passenger side with Mounting Bracket Shown



Factory Bolt

Figure 2

Driver side without Mounting Bracket Shown

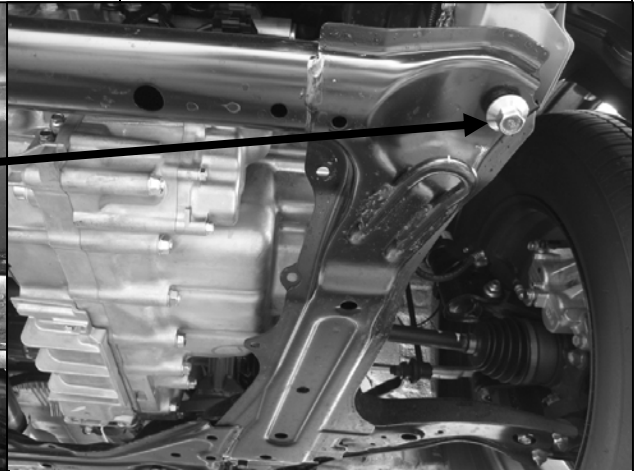
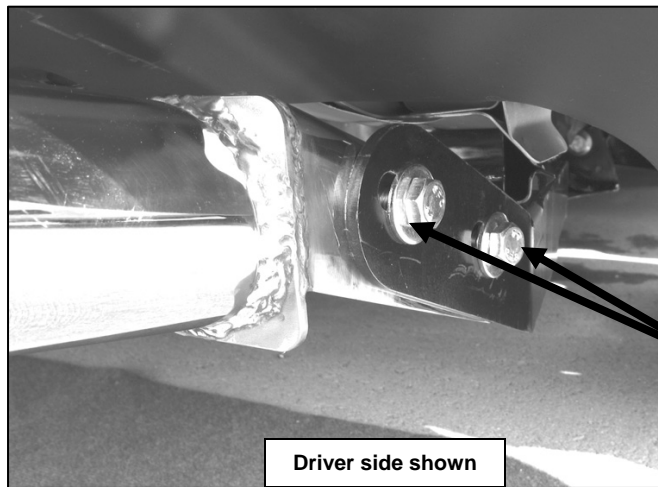


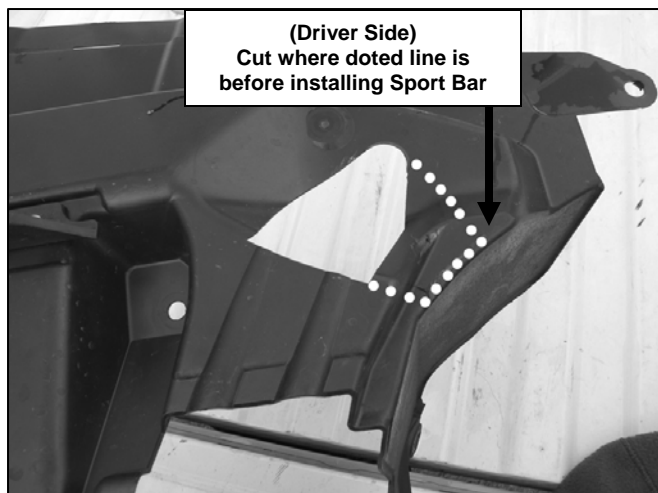
Figure 3



Driver side shown

Sport Bar Mounting Location  
(2) 12mm x 35mm Bolt, (4) Flat Washers, & (2) Nylock Nut

Figure 4



(Driver Side)  
Cut where dotted line is  
before installing Sport Bar

Figure 5