



INSTALLATION INSTRUCTIONS

2014-Current TOYOTA HIGHLANDER

1170

Qty	Hardware	Qty	Hardware (Five bags)
2	Front Mounting Brackets	10	Drop Pins
2	Middle Mounting Brackets	10	Flat Washers
2	Rear Mounting Brackets	10	Lock Washers
		10	Nuts





14-19 Highlander



20-22 Highlander Front



STEP1: Verify all parts are present. Read instructions carefully before starting installation.

Passenger Side Installation



STEP2: Starting on the front passenger side of the vehicle, insert two drop pins into the factory holes. Select passenger side front mounting bracket and secure it with flat washers, lock washers and nuts. Do not tighten hardware at this time. (Fig1)

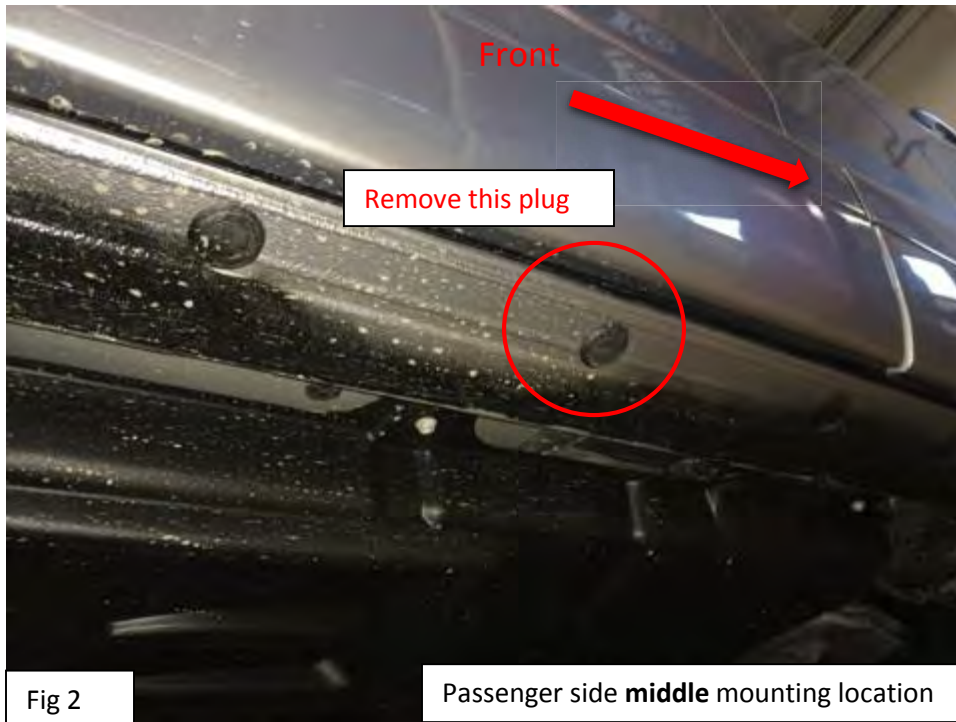


Fig 2

Passenger side **middle** mounting location

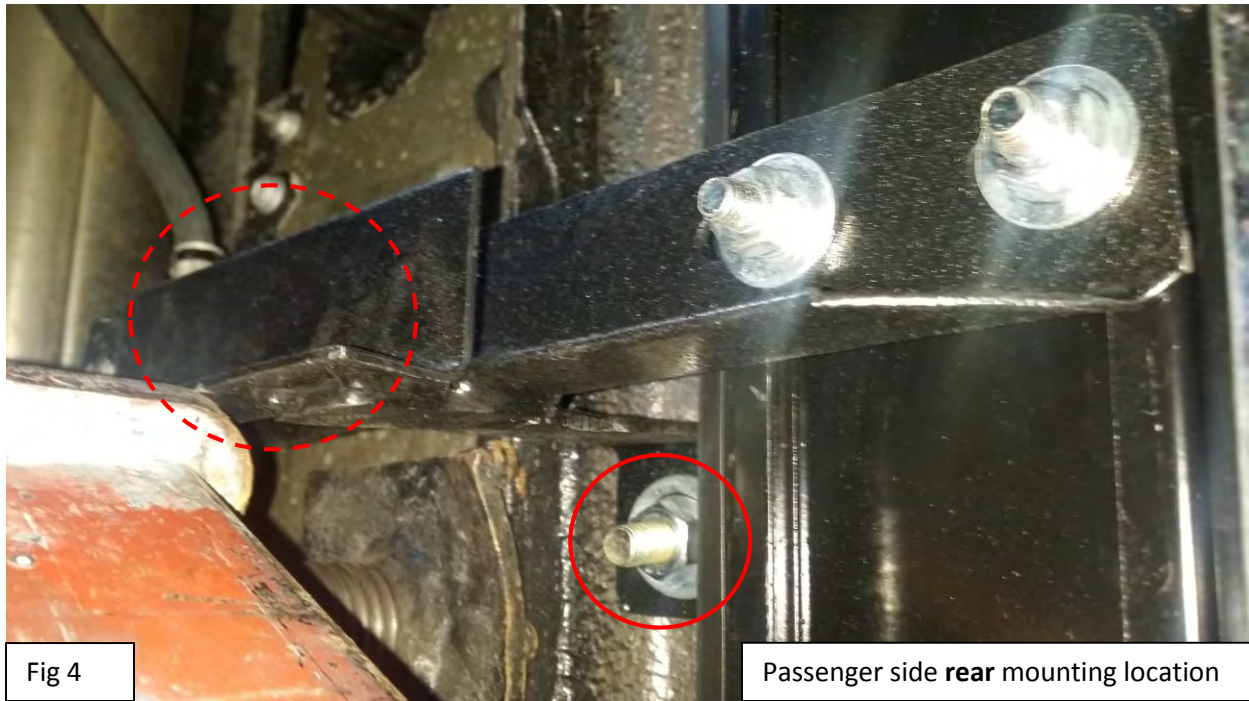
STEP3: Next, locate and remove the middle rubber plug. (Fig2)



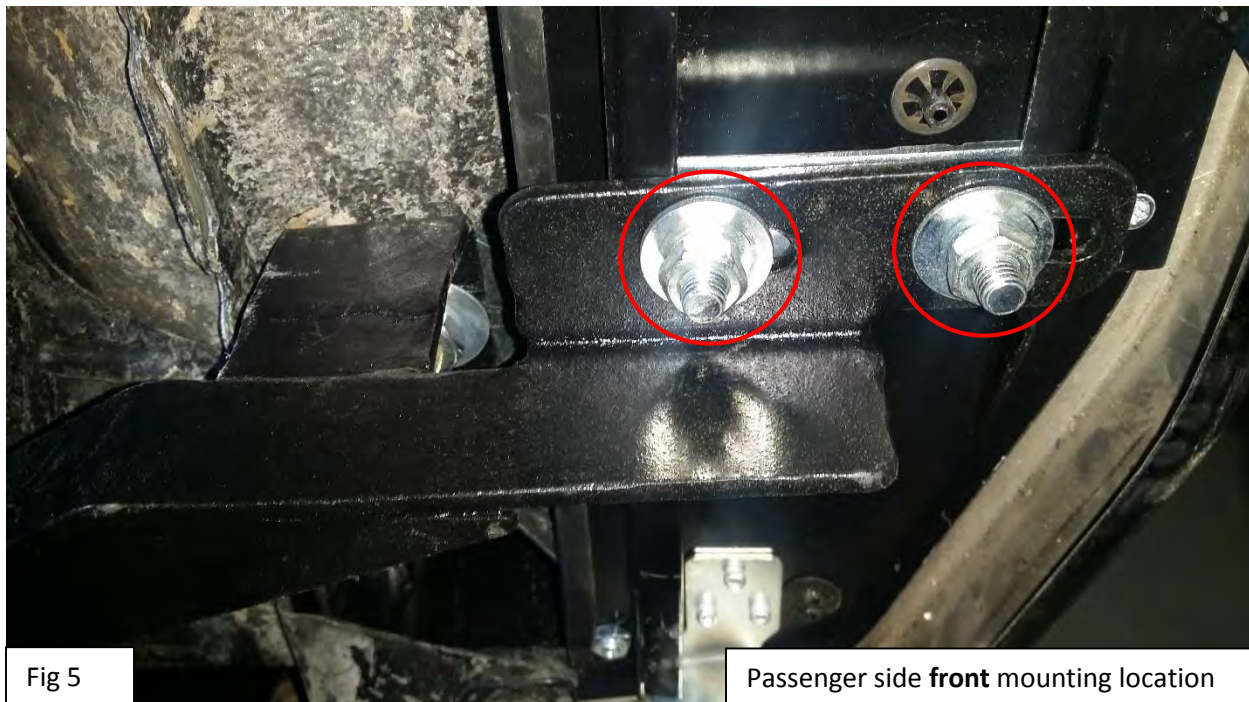
Fig 3

Passenger side **middle** mounting location

STEP4: Insert a drop pin into the factory hole. Select passenger side middle mounting bracket and secure it with a flat washer, a lock washer and a nut. Do not tighten hardware at this time. (Fig3)



STEP5: Next, move on to the passenger side rear and insert two drop pins into the factory holes. Select passenger side rear mounting bracket and secure it with flat washers, lock washers and nuts. Do not tighten hardware at this time. (Fig4)



STEP6: Lastly, attach the running board with front, middle, rear mounting brackets using hardware that came with the board. And then tighten all hardware. (Fig5)

STEP7: Repeat steps 2-6 for the driver side installation.