



# INSTALLATION INSTRUCTIONS

2014-2016 ACURA MDX / 2016-2019 HONDA PILOT  
BULL BAR WITH SKID PLATE PART#VGUBG-1221SS-LED

Quantity	Hardware
2	Mounting Brackets
4	Screw
8	Flat Washer
4	Lock Washer
4	Nut



STEP1: Verify all parts are present. Read instructions carefully before starting installation.

STEP2: Starting from the Driver Side, remove the factory screw shown in Fig1.



Fig 1

STEP3: Cutting on the skid shield for approximately 3" wide and 5" long as shown in Fig2.

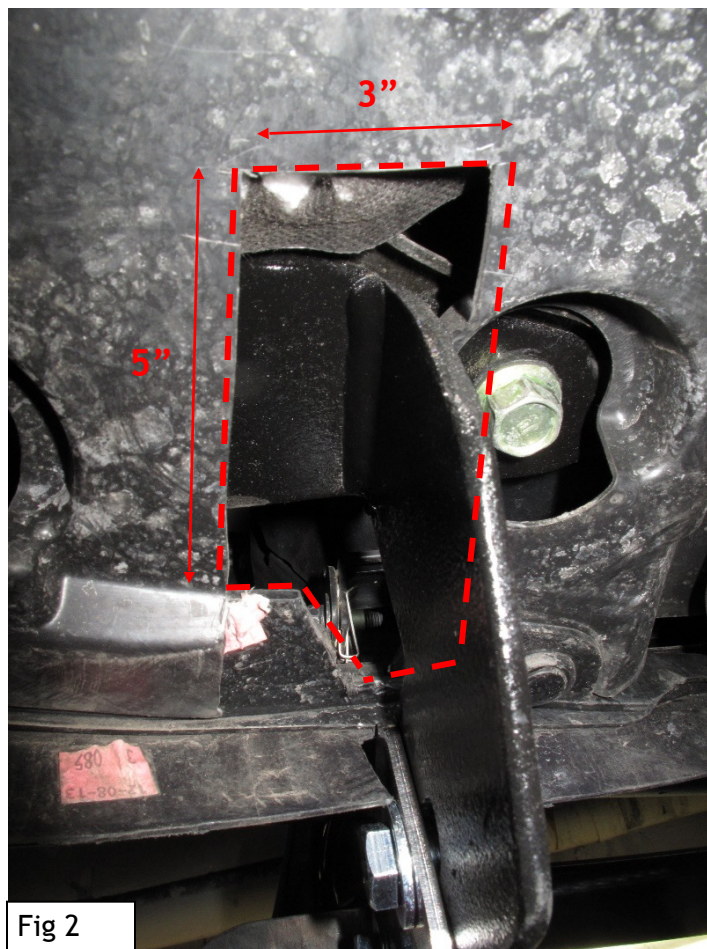


Fig 2

STEP4: Cutting on the plastic area shown in Fig3 for approximately 1” wide and 2” long.

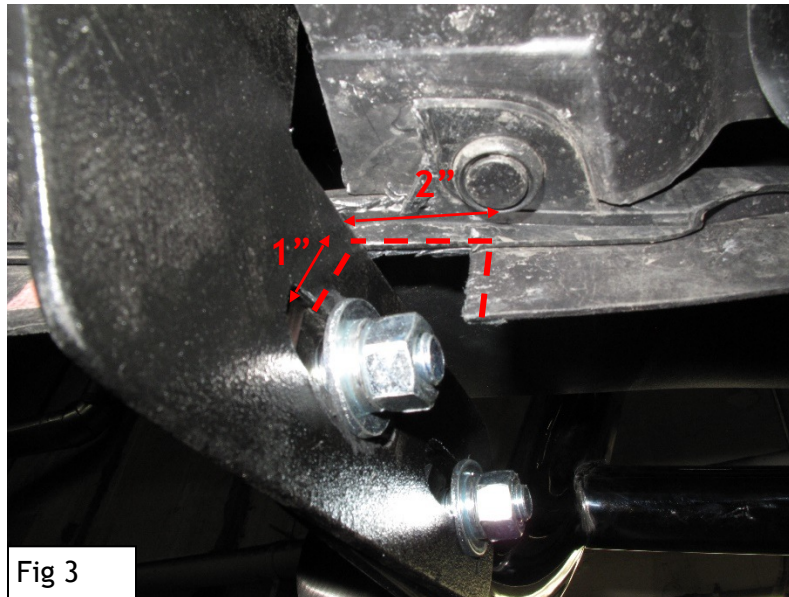
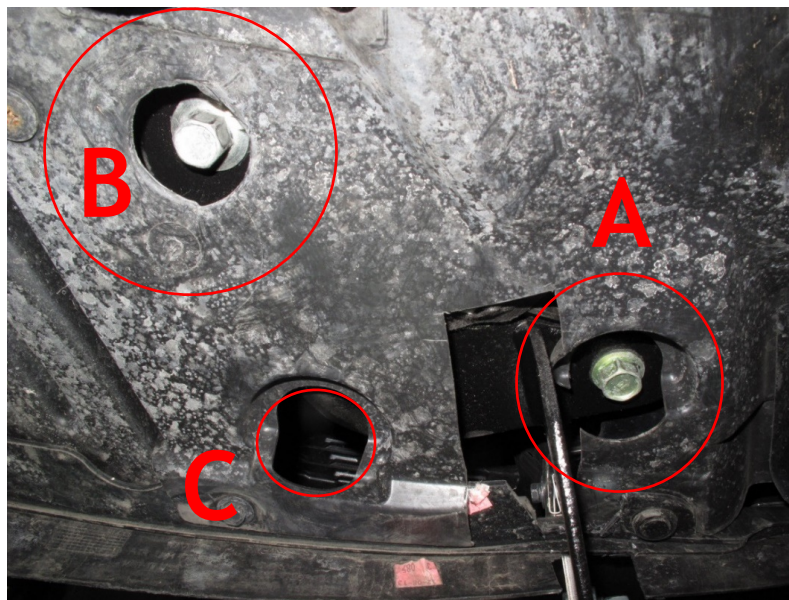


Fig 3

STEP5: As shown in Fig4, first remove the factory screw on the right (Marked: A) and then remove the factory screw on the left (Marked: B). Hold the skid shield while sliding the Driver Side Mounting Bracket into the 3”X5” opening.



STEP6: Apply WD-40 on the factory screws. And firstly put back the screw on the left [Marked: B], secondly put back the screw on the right [Marked: A]. Lastly, put back the factory screw removed from step2 [Marked: C]. (Fig4)

STEP7: Repeat step 2-6 for the Passenger Side Mounting Bracket installation.

Fig 4

STEP8: Select the Bull Bar and install it on the mounting brackets using 2 Screws, 4 Flat Washers, 2 Lock Washers and 2 Nuts on each side. Tighten all hardware at the end to finish the installation (Fig5, Fig6).

