



INSTALLATION INSTRUCTIONS

19+ SUBARU CROSSTREK
19+ SUBARU FORESTER

Qty	Hardware	Qty	Hardware (Five bags)
2	Front Mounting Brackets	10	Drop Pins
2	Middle Mounting Brackets	10	Flat Washers
2	Rear Mounting Brackets	10	Lock Washers
		10	Nuts

Thank you very much for choosing our products.

Please read the installation instruction carefully before using our product and be sure to fully understand the contents mentioned above for subsequent installation.

In addition, please keep properly the installation instruction for product maintenance in future.

Attentions

- The following symbols are used in this installation instruction.



Caution

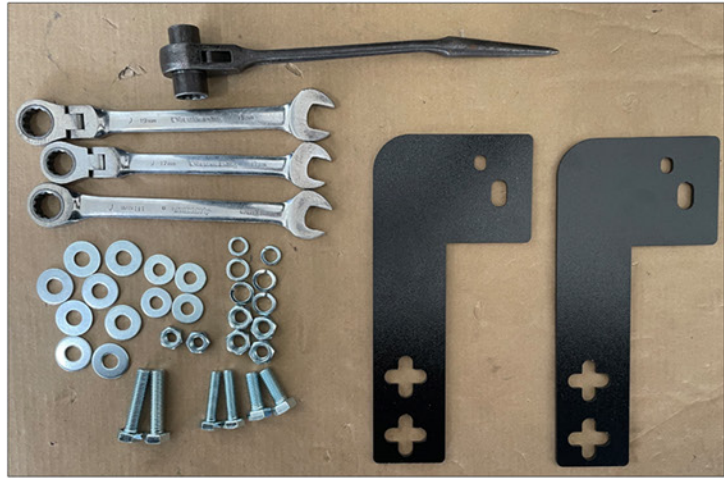
**Relevant matters must be obeyed for safety.
Non-compliance may result in injury or other accidents.
Please read carefully and obey strictly.**



Note

Relevant matters must be obeyed for the smooth installation and use.

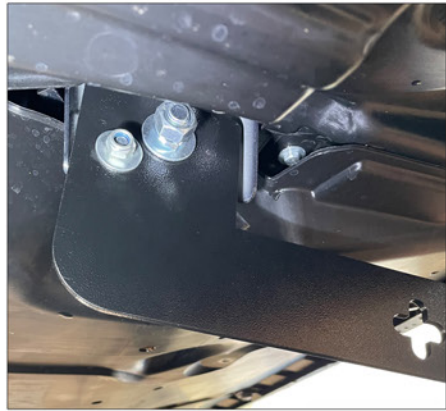
- Non-compliance may cause the problems with vehicle. Please do not install that is not recorded in this instruction.
- Please forgive that we are not responsible for any consequences arising from the installation not according to our installation instruction.



1.Prepare the installation tools and bumper.



2.Remove part of the fender of the front car.



3. Mounting brackets



4. Fix the screws with tools

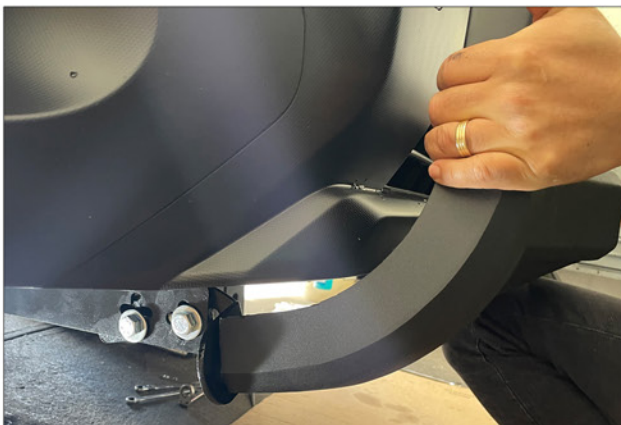
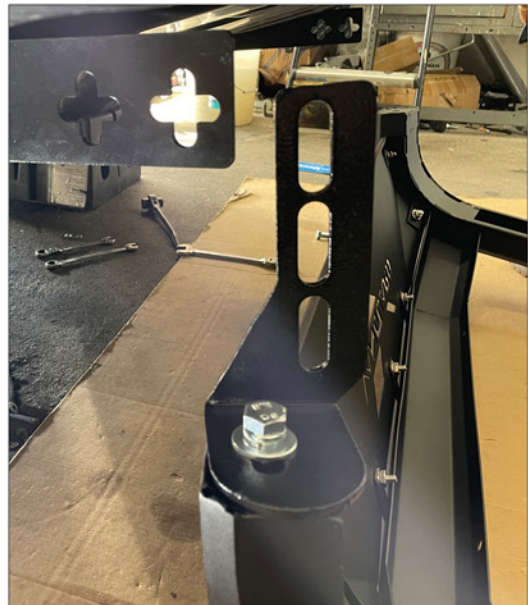
5. Complete bracket installation.





6. Prepare to install bumper.

7. Install the bumper bracket.



8. Connect the mounting bracket to adjust the height of the bumper.



9. Secure with an air gun.

10. Installed.

