

# INSTALLATION INSTRUCTION

DESCRIPTION: Honda Odyssey SS Rear Bumper Guard (Double Layer)

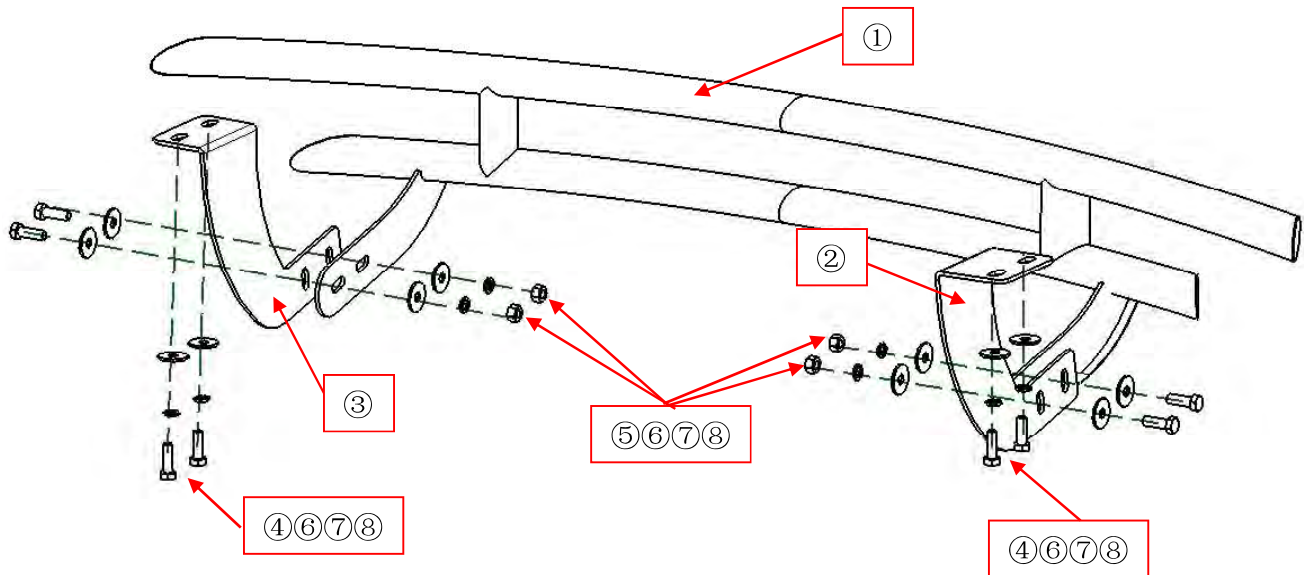
Attention:

- Please read this installation menu before installing this part. Protect your car properly in case there is any scratch might happen.
- You may need to periodically to re-tighten all hardware for safety use after installation.
- Installation pictures are only for your reference, there might be some differences between pictures and real parts but no affection for your fitting.

Part List

No.	NAME	REMARK	No.	NAME	REMARK
①	Rear Bumper		⑤	Hexagon Head Bolt	M12*35
②	Bracket (right)		⑥	Extra Large Washer	φ12*35*3.0
③	Bracket (left)		⑦	Spring Washer	φ12
④	Hexagon Head Bolt (fin thread)	M12*35	⑧	Hexagon Nut	M12

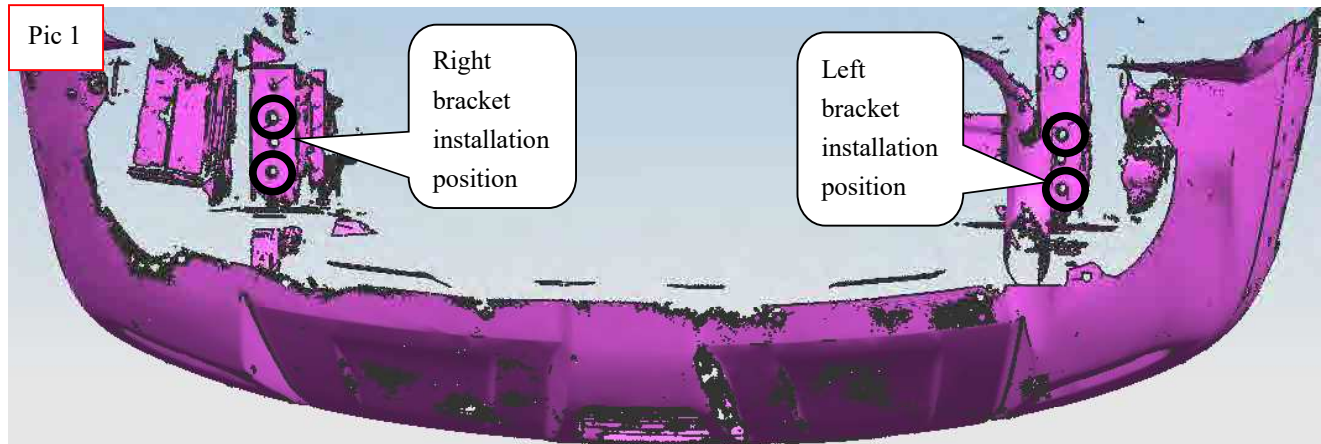
## INSTALLATION PICTURE



## INSTALLATION PROCEDURES

Step 1: Refer to the Part List and Installation Picture to check if all hardware are included.

Step 2: Refer to the following picture to install the mounting brackets.



Step 3: Refer to Pic 2 to install the brackets on the bottom.

Step 4: Refer to Pic3 to install the rear bumper and then adjust the brackets to the proper position.

