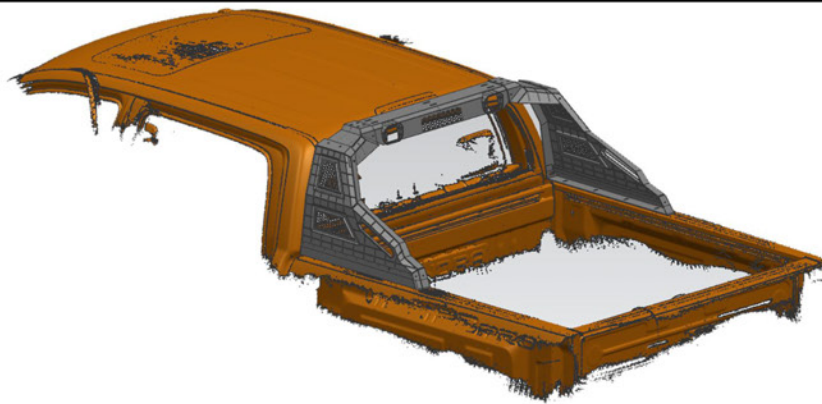


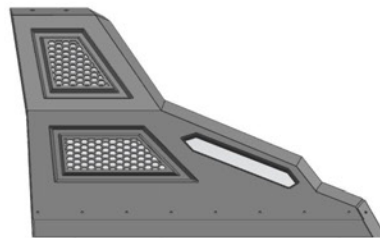
# Specification for die-cast aluminum gantry



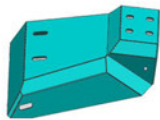
## Contents . Contenu . Contenido



**main body 1X**



**main body3 2X  
(bilateral symmetry)**



**main body2 2X  
(bilateral symmetry)**



**light 2X**



M6\*20 16X



M6 16X



M6 20X



M6\*25 4X



M8\*25 12X



M8 12X



M10\*30 8X



M10 8X

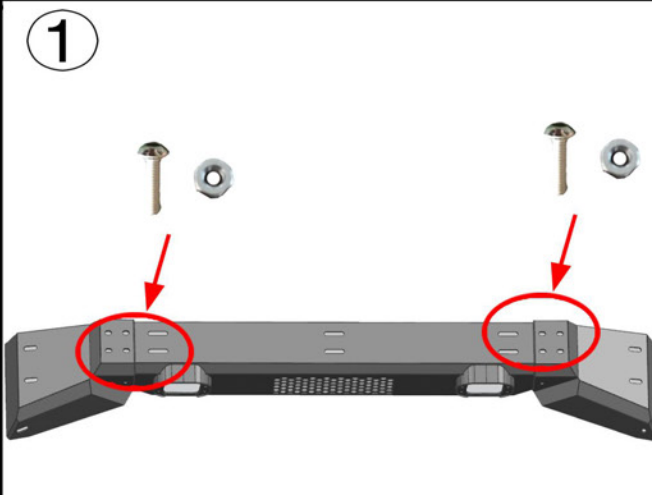


M10 1X



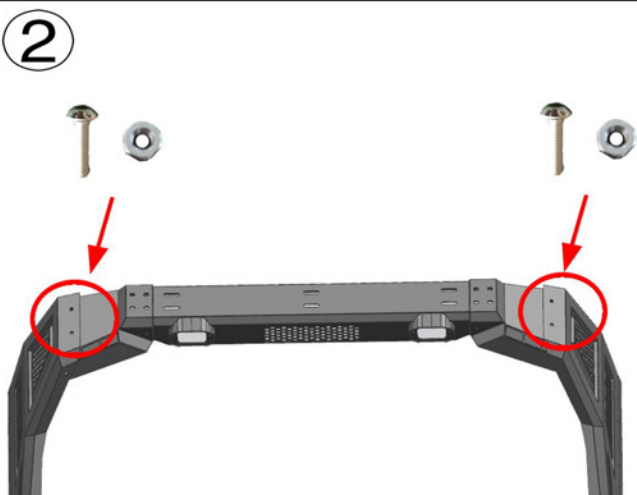
M10 8X

①



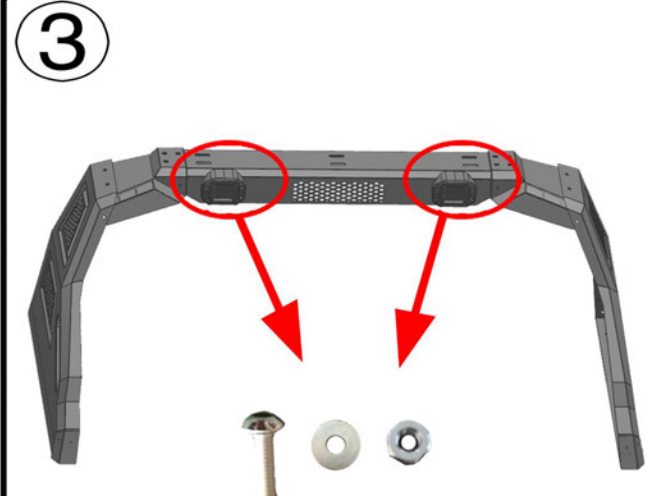
1. Align the holes of main body 1 and main body 2 according to the above figure, and fix them with M8\*25 screws and M8 nuts.

②



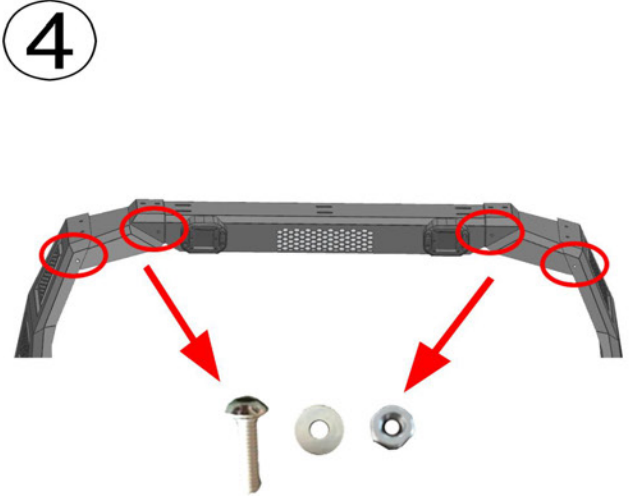
2. Then fix the two bodies 3 on both sides with M8\*25 screws and M8 nuts as shown above.

③



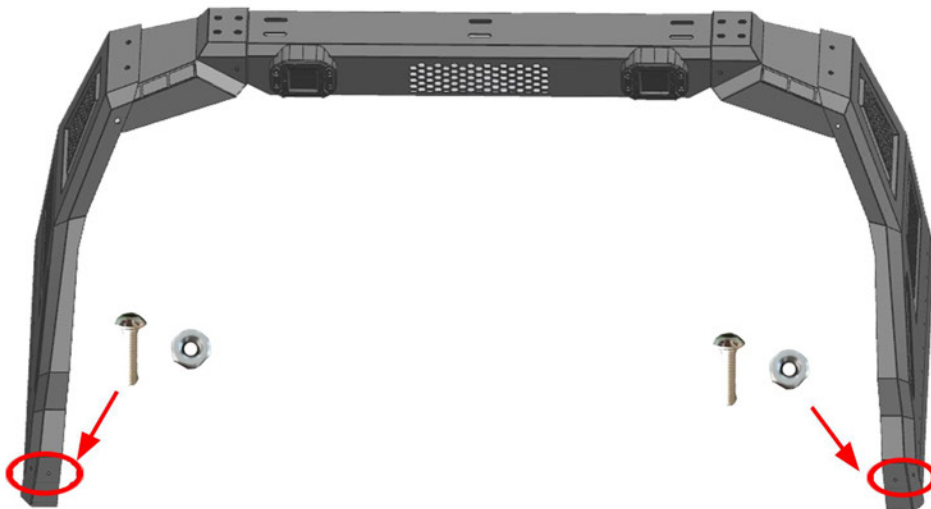
3. Place the lamp in the position shown in the figure, and then fix it with M6\*20 screws.

④



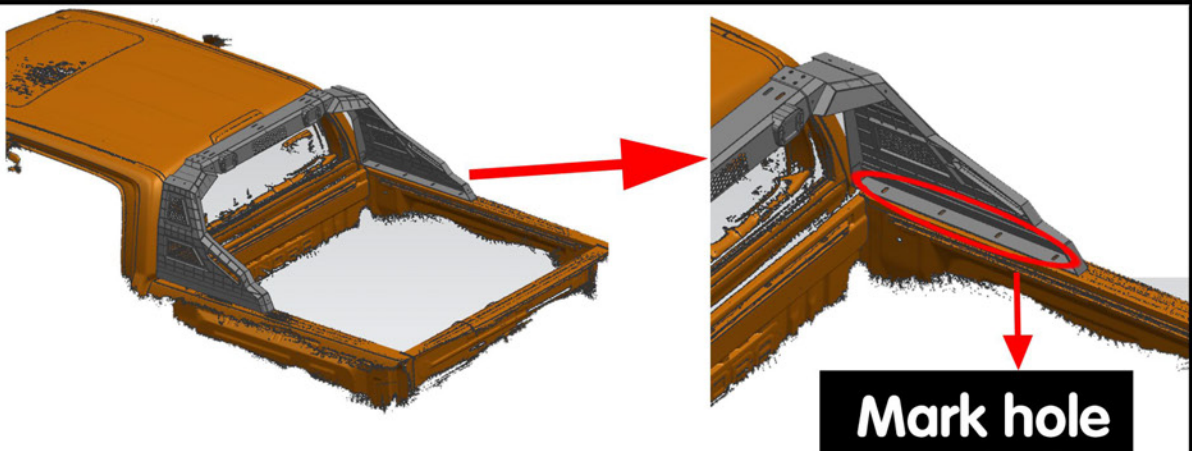
4. Fix the holes circled in the figure with M6\*20 screws, and the holes on the back of the product are in the same position.

5



5.The circled part in the figure is fixed with M 6\*25 screws.

6



6.Put the installed products in the front of the carriage, as shown in the figure.  
After alignment, punch holes at the marked holes, and enlarge the holes to M10.  
Then put Ram into the holes with a Ram device, and then put the products up again.  
After alignment, fix them with M10 \*30 screws, washers and nuts, and pay attention to tightening them.