

Installation Instructions

06-11 BENZ ML350 3"BULL BAR
PART NO # VGUBG-0911SS

Part List

Qty	Description	Qty	Description
1	Sport Bar	16	12.5mm x 30mm x 2.5mm flat washer
1	Lower bracket (driver)	8	12mm lock washer
1	Lower bracket (passenger)	8	M12 Nuts
1	T Bracket (Driver)	4	M8 x 30mm Hex Bolt
1	T Bracket (Passenger)	8	8.5mm x 25mm x 2mm flat washer
2	M12 "T" Hex Bolt	4	8mm lock washer
6	M12 x 30mm Hex Bolt	4	M8 Nuts

Procedure:

1. Remove content from box and check for damage, verify all parts are present, read instructions carefully.

2. detach lower liner located in front of vehicle and set aside (temporarily)

3. Detach rubber hose from retainer clip located on driver side see fig1.

4. Remove oval rubber plug located behind body mount bushing and insert M12"T"bolt(see Fig 2.)

5. Determine driver and passenger lower bracket and install using (2)12.5mm x 30mm x 2.5mm flat washers, (2)12mm lock washers, (1)M12 Nut, Leave loose(passenger side shown)see Fig 2.

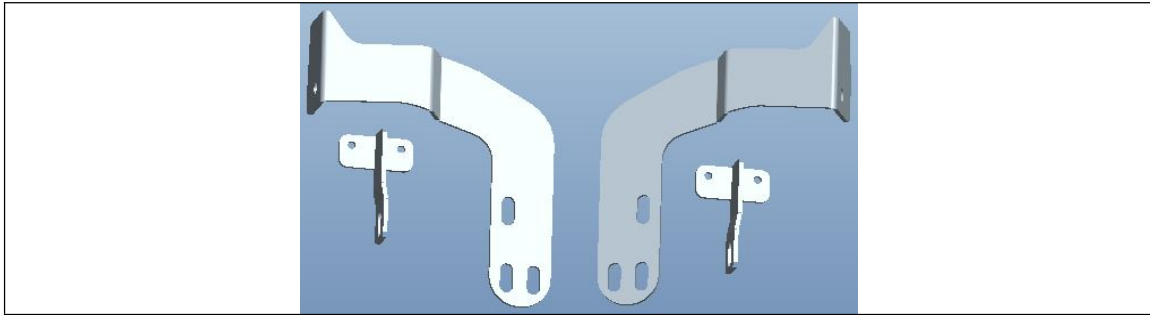
6. Remove existing bolt(temporarily) on radiator support and install T bracket using existing bolt. (2)M8*30mm Hex Bolts(4)8mm x 25mm x 2mm flat washers(2)8mm lock washers(2)M8 Nuts leave loose(passenger side shown).

7.Repeat procedure 4, 5, 6 on opposite side.

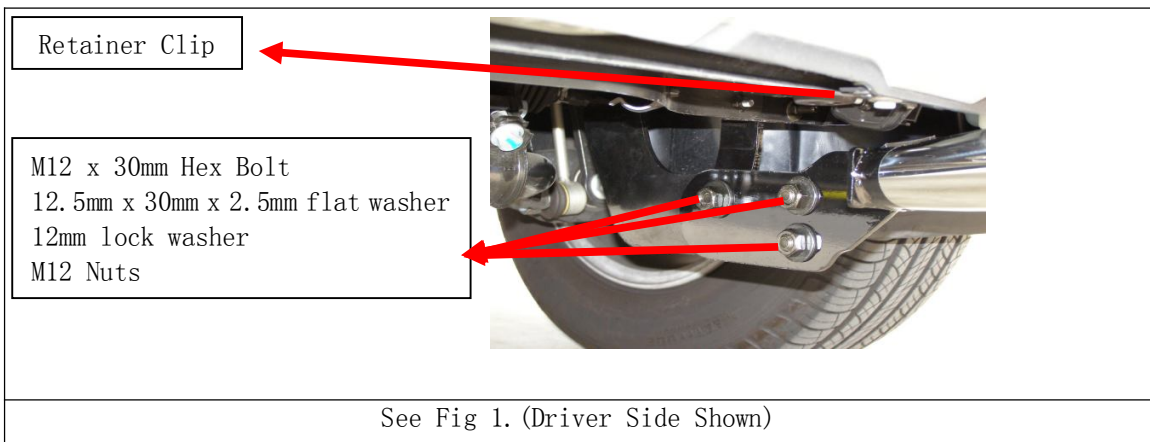
8. Attach sport bar on inside of lower brackets using(4)M12x 30mm Hex Bolts(8)12.5mm*30mm*2.5mm flat washers(4)12mm lock washers(4)M12 Nuts then attach T bracket to lower bracket and sport bar using(2)M12x 30mm Hex Bolts(4)12.5mm*30mm*2.5mm flat washers(2)12mm lock washers(2)M12 Nuts. See Fig 1. (Driver Side Shown)

9. Level and adjust sport bar as desired tighten and torque bolts

10. Measure and trim lower plastic liner as desired. Reinstall lower plastic liner on vehicle.



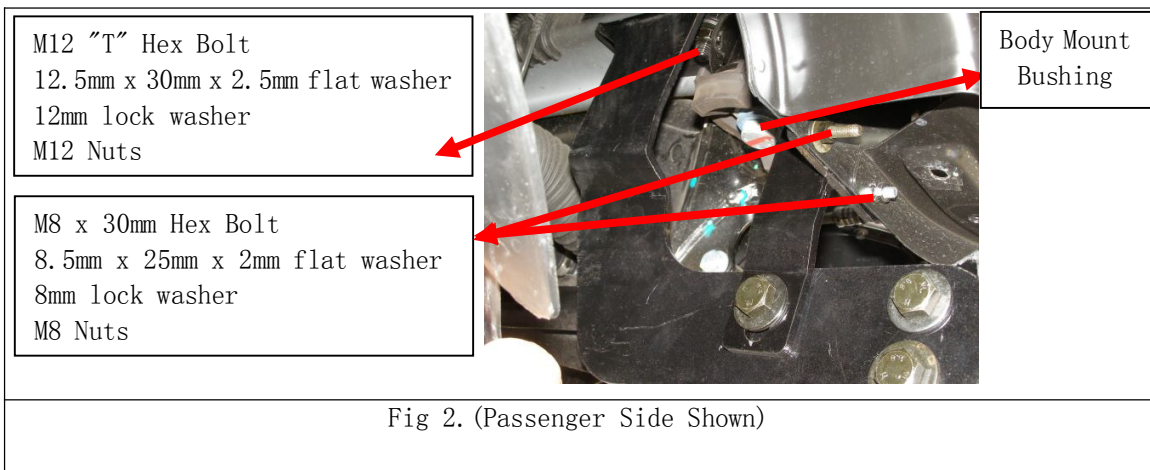
Hardware Kit



Retainer Clip

M12 x 30mm Hex Bolt
12.5mm x 30mm x 2.5mm flat washer
12mm lock washer
M12 Nuts

See Fig 1. (Driver Side Shown)



M12 "T" Hex Bolt
12.5mm x 30mm x 2.5mm flat washer
12mm lock washer
M12 Nuts

M8 x 30mm Hex Bolt
8.5mm x 25mm x 2mm flat washer
8mm lock washer
M8 Nuts

Body Mount
Bushing

Fig 2. (Passenger Side Shown)