

Part No. **2274b**

Product: Running Boards

Application:

**Hyundai Palisade 2020+**

**Kia Telluride 2020+**

Level of Difficulty: 1 **2** 3 4 5

Installation Time: 90 Min

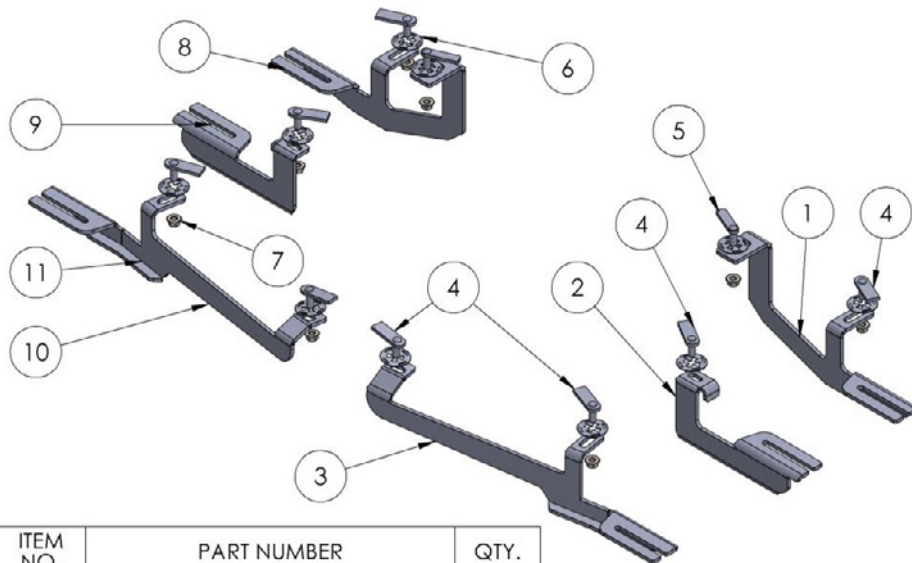
# Installation Instructions

REV 1 02/10/20

Hardware	Torque Specifications
M6 Bolt	3 ft-lbs.
M8 Bolt	7 ft-lbs.
M10 Bolt	16 ft-lbs.
M12 Bolt	28 ft-lbs.

**ATTENTION:** Use correct torque settings to avoid damaging the running boards and or mounting brackets. Failure to do so will void your warranty.

If you have any questions please contact our technical team at 1-866-717-6645

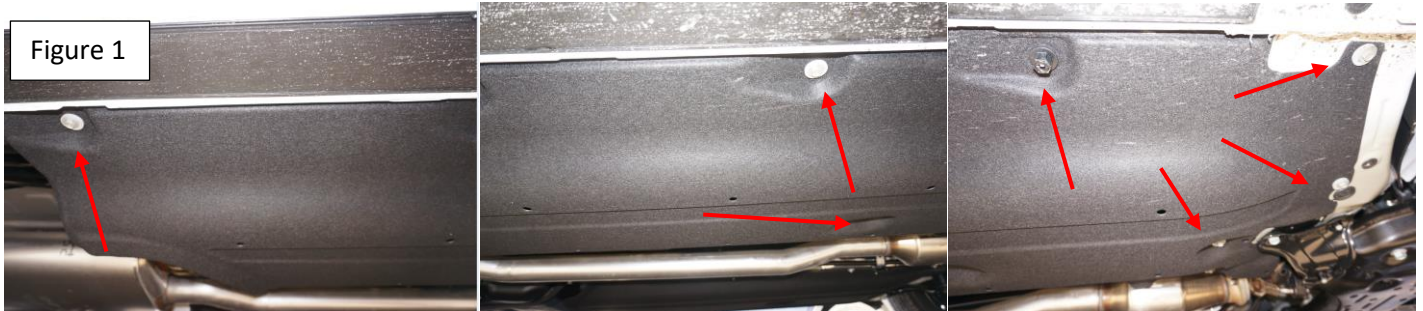


ITEM NO.	PART NUMBER	QTY.
1	2332850B0 Driver	1
2	233285C0 Driver	1
3	2332850F0 Driver	1
4	HTC 230 - M10x25 (5x20x60)	8
5	HTC 262 - M10x30 (5X15X60)	2
6	HTC 269 - CLIPS (M10)	10
7	DIN 6923 FLANGE NUT - M10	10
8	2332850B0 Passenger	1
9	233285C0 Passenger	1
10	2332850F0 Passenger	1

# Installation Instructions 2274 Bracket Kit

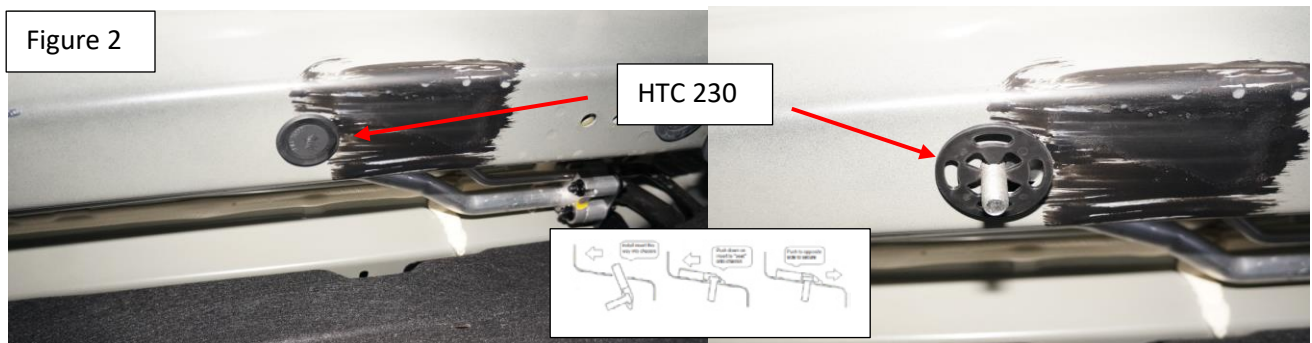
**NOTE: This vehicle requires undercarriage panel trimming**

**Step 1:** Remove lower undercarriage panels. Front Figure 1

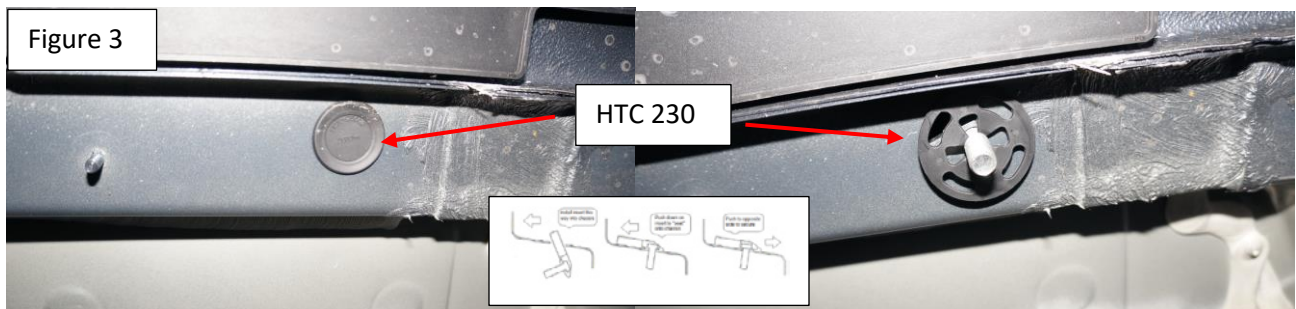


**Step 2:** Locate front mounting locations and hardware as per 1<sup>st</sup> page of this installation manual

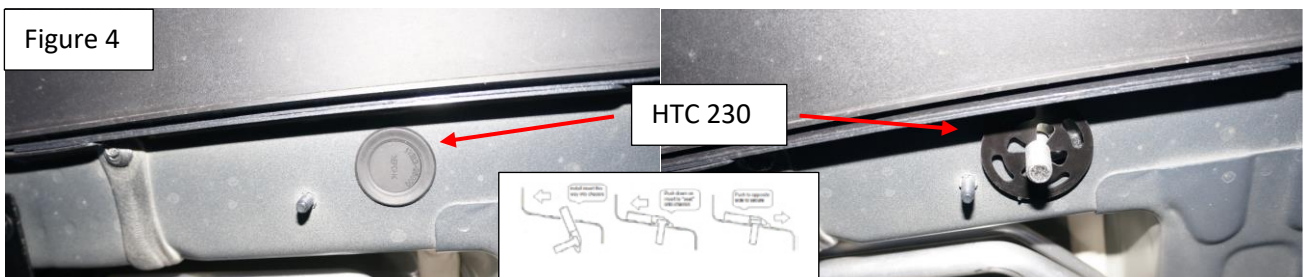
**Step 3:** Remove factory rubber plug on inner mounting area Figure 2 install supplied HTC 230



**Step 4:** Remove factory rubber plug on outer mounting area Figure 3 install supplied HTC 230

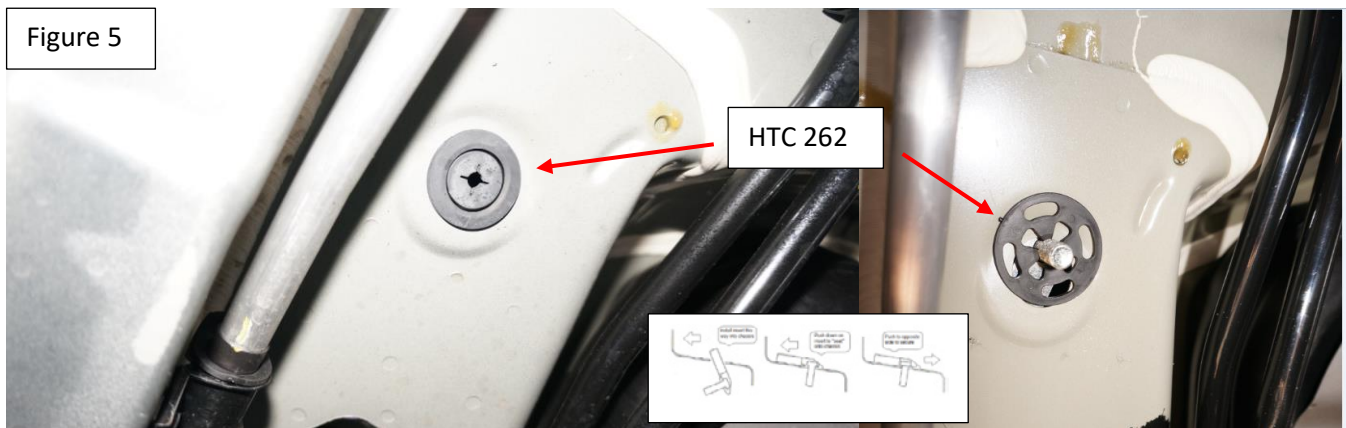


**Step 5:** Remove factory rubber plug on middle mounting area Figure 4 install supplied HTC 230



# Installation Instructions 2274 Bracket Kit

**Step 6:** Remove factory rubber plug on rear inner mounting area Figure 5 install supplied HTC 262



**Step 7:** Remove factory rubber plug on rear outer mounting area Figure 6 install supplied HTC 230



**Step 8:** Trim a 4 x 4 square on front inner mounting location, using the HTC 230 as a guide mark and cut Figure 7. Trim a 2 x 4 piece in the front outer panel, use the factory bolt as a guide Figure 8



# Installation Instructions 2274 Bracket Kit

**Step 9:** Trim a 2 x 2 square in the middle bracket location as show Figure 9

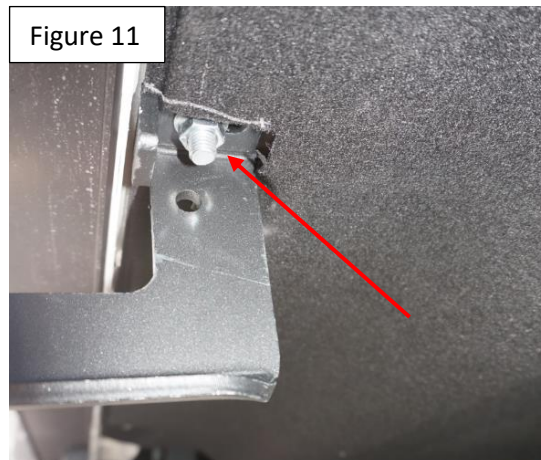


**Step 10:** Install panels back onto vehicle.

**Step 11:** Install front bracket as shown Figure 10 Do not tighten



**Step 12:** Install middle bracket as shown Figure 11 Do not tighten



# Installation Instructions 2274 Bracket Kit

---

**Step 13:** Install rear bracket as shown Figure 12 Do not tighten

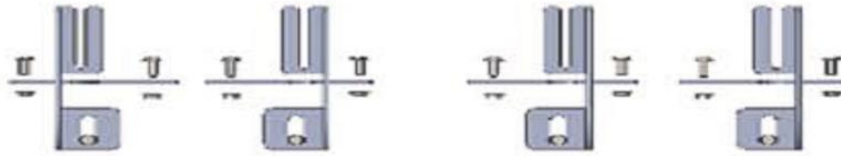
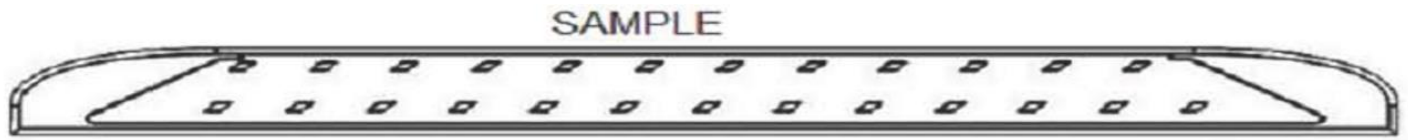


**Step 14:** Proceed to last page of this manual for running board install instructions and torque values

For Technical support please call our team at 1-718-565-1960 and one of our experts will assist you with this installation.

***Thank you for choosing Vanguard Off-Road.***

# Running Board Installation Instructions



**RAL / RB2 / REC / RCV / RZR**



**ROB / ROF / RPD**

- 1) Flip your Vanguard running boards onto a flat surface, make sure to place the running boards on a towel or cardboard in order to protect the surface Figure 1.
- 2) Loosen the M8 bolts on back of your running boards Figure 2. Depending on your model there will be either 6 or 8 bolts installed per side.
- 3) Once your brackets have been installed, place the running board onto the brackets as shown on Figure 3.
- 4) Adjust running boards, centering on vehicle. Hand tight M8 hardware on running boards.
- 5) Follow the torque procedures, torque M8 hardware to **7 ft-lbs** using a torque wrench.
- 6) Cleaning and maintaining your running boards is important, apply a light coat of a quality carnauba wax at least 2X per year. Wash often with mild soap and make sure to remove all soap residue. Many car automatic car washes use a strong soap, make sure to use enough water to remove all residue.